



UK Office

Everest Biotech Ltd

Cherwell Innovation Centre
77 Heyford Park
Upper Heyford
Oxfordshire
OX25 5HD
UK

Enquiries:

info@everestbiotech.com

Sales:

sales@everestbiotech.com

Tech support:

support@everestbiotech.com

Tel: +44 (0)1869 238326

Fax: +44 (0)1869 238327

US Office

Everest Biotech c/o Abcore

405 Maple Street, Suite A106
Ramona,
CA 92065
USA

Inquiries:

info@everestbiotech.com

Sales:

usasales@everestbiotech.com

Tech support:

support@everestbiotech.com

Tel: 888-320-4628 (toll-free)

Fax: 888-841-9041

www.everestbiotech.com

**Research Use Only. Not for
diagnostic or therapeutic use.**

EB09611 - Goat Anti-UBR4 / ZUBR1 Antibody

Size: 100µg specific antibody in 200µl



Target Protein

Principal Names: UBR4, ubiquitin protein ligase E3 component n-recognin 4, FLJ41863, KIAA0462, KIAA1307, RBAF600, ZUBR1, p600, retinoblastoma-associated factor 600, retinoblastoma-associated factor 600-like protein, zinc finger, UBR1 type 1

Official Symbol: UBR4

Accession Number(s): NP_065816.2

Human GeneID(s): [23352](#)

Non-Human GeneID(s): 69116 (mouse), 313658 (rat)

Immunogen

Peptide with sequence C-NTTRATSREEKNLQ, from the C Terminus of the protein sequence according to NP_065816.2.

Please note the [peptide](#) is available for sale.

Purification and Storage

Purified from goat serum by ammonium sulphate precipitation followed by antigen affinity chromatography using the immunizing peptide.

Supplied at 0.5 mg/ml in Tris saline, 0.02% sodium azide, pH7.3 with 0.5% bovine serum albumin.

Aliquot and store at -20°C. Minimize freezing and thawing.

Applications Tested

Peptide ELISA: antibody detection limit dilution 1:128000.

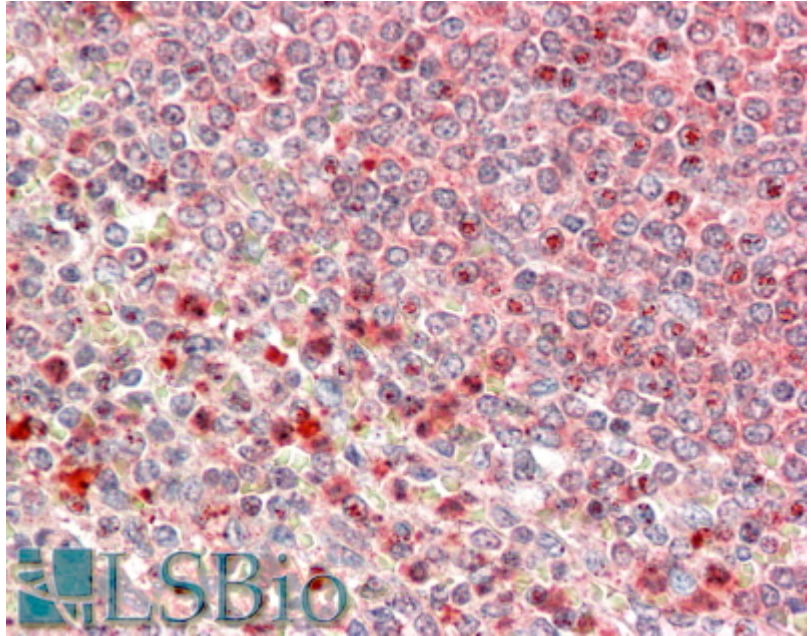
Western blot: Not yet tested - our routinely used western blotting protocol does not allow detection of proteins as large as the calculated size of 574kDa according to NP_065816.2. Therefore we cannot recommend an optimal concentration and the antibody is an aspiring product. We would appreciate any feedback from people in the field - have any results been reported with other antibodies/lysates? Have any further splice variants/modified forms been reported?

IHC: In paraffin embedded Spleen shows various types of subnuclear staining in select splenocytes and additional membrane plus cytoplasm staining elsewhere. Recommended concentration, 5-10µg/ml.

Species Reactivity

Tested: Human

Expected from sequence similarity: Human, Mouse, Rat, Dog, Cow



EB09611 (5µg/ml) staining of paraffin embedded Human Spleen. Steamed antigen retrieval with citrate buffer pH 6, AP-staining.