

UK Office

Everest Biotech Ltd

Cherwell Innovation Centre
77 Heyford Park
Upper Heyford
Oxfordshire
OX25 5HD
UK

Enquiries:

info@everestbiotech.com

Sales:

sales@everestbiotech.com

Tech support:

support@everestbiotech.com

Tel: +44 (0)1869 238326

www.everestbiotech.com

**Research Use Only. Not for
diagnostic or therapeutic use.**

EB10219 - Goat Anti-UCHL1 (aa 58-68) Antibody

Size: 100µg specific antibody in 200µl



Target Protein

Principal Names: neuron cytoplasmic protein 9.5, PARK5, PGP9.5, PGP95, ubiquitin carboxyl-terminal esterase L1, ubiquitin carboxyl-terminal esterase L1 (ubiquitin thiolesterase), ubiquitin C-terminal hydrolase, Uch-L1, UCHL1

Official Symbol: UCHL1

Accession Number(s): NP_004172.2

Human GeneID(s): [7345](#)

Non-Human GeneID(s): 22223 (mouse), 29545 (rat)

Immunogen

Peptide with sequence C-QHENFRKKQIE, from the internal region of the protein sequence according to NP_004172.2.

Please note the [peptide](#) is available for sale.

Purification and Storage

Purified from goat serum by ammonium sulphate precipitation followed by antigen affinity chromatography using the immunizing peptide.

Supplied at 0.5 mg/ml in Tris saline, 0.02% sodium azide, pH7.3 with 0.5% bovine serum albumin.

Aliquot and store at -20°C. Minimize freezing and thawing.

Applications Tested

Peptide ELISA: antibody detection limit dilution 1:16000.

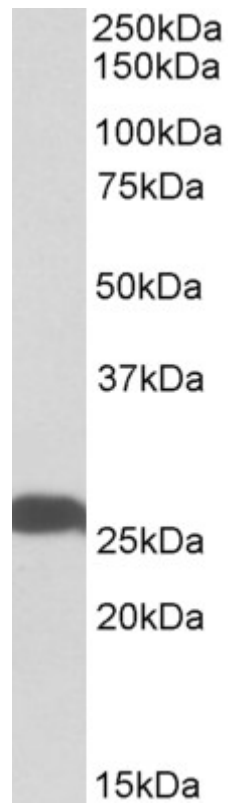
Western blot: Approx 26kDa band observed in Human Brain (Cerebellum and Hippocampus) and Mouse and Rat Brain lysates (calculated MW of 24.8kDa according to Human NP_004172.2, Mouse NP_035800.2 and Rat NP_058933.2). Recommended concentration: 0.01-0.03µg/ml.

IHC: Paraffin embedded Human Brain (Cortex). Recommended concentration: 2.5µg/ml.

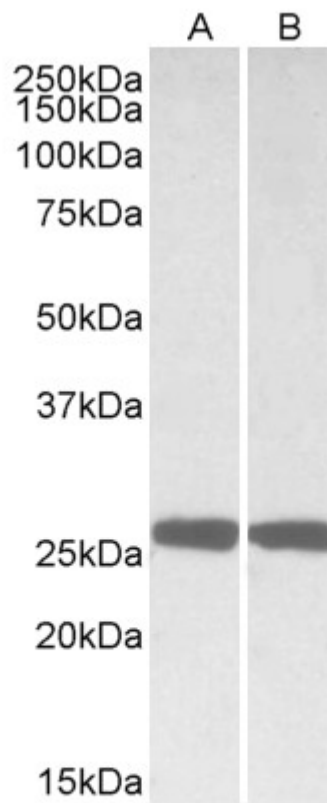
Species Reactivity

Tested: Human, Mouse, Rat

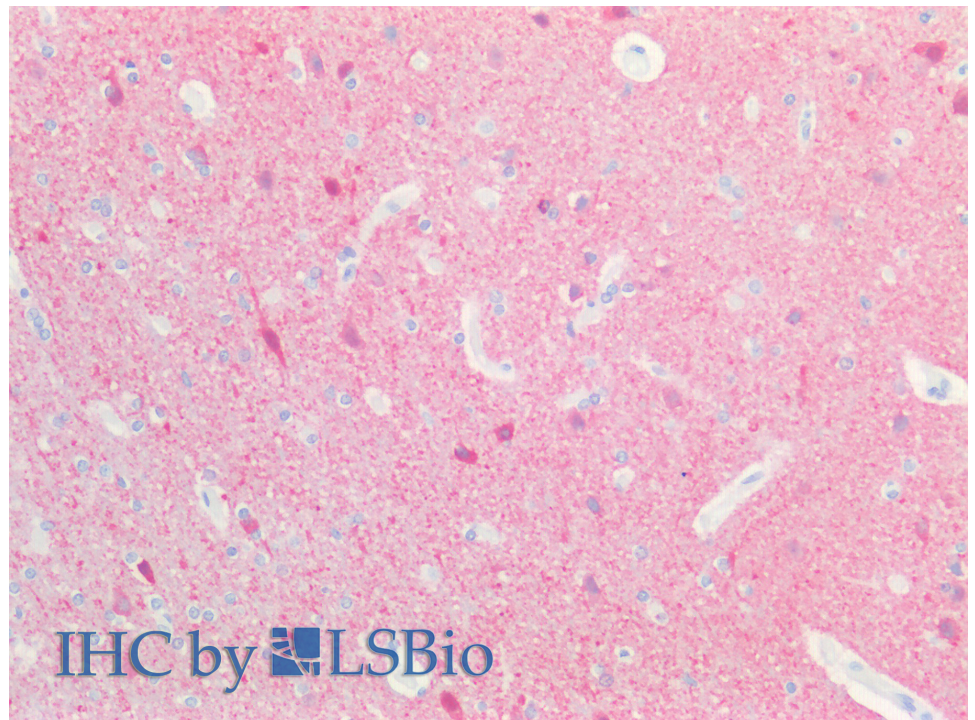
Expected from sequence similarity: Human, Mouse, Rat, Dog, Pig, Cow



EB10219 (0.01 μ g/ml) staining of Human Hippocampus lysate (35 μ g protein in RIPA buffer). Primary incubation was 1 hour. Detected by chemiluminescence.



EB10219 (0.01µg/ml) staining of Mouse (A) and Rat (B) Brain lysates (35µg protein in RIPA buffer). Primary incubation was 1 hour. Detected by chemiluminescence.



IHC by  LSBio

EB10219 (2.5µg/ml) staining of paraffin embedded Human Cortex. Steamed antigen retrieval with citrate buffer
Ph 6, AP-staining.