

## UK Office

### Everest Biotech Ltd

Cherwell Innovation Centre  
77 Heyford Park  
Upper Heyford  
Oxfordshire  
OX25 5HD  
UK

Enquiries:

[info@everestbiotech.com](mailto:info@everestbiotech.com)

Sales:

[sales@everestbiotech.com](mailto:sales@everestbiotech.com)

Tech support:

[support@everestbiotech.com](mailto:support@everestbiotech.com)

Tel: +44 (0)1869 238326

[www.everestbiotech.com](http://www.everestbiotech.com)

**Research Use Only. Not for  
diagnostic or therapeutic use.**

## EB06994 - Goat Anti-UCP1 Antibody

Size: 100µg specific antibody in 200µl



### Target Protein

**Principal Names:** UCP1, uncoupling protein 1 (mitochondrial, proton carrier), HGNC:12517, SLC25A7, UCP, mitochondrial brown fat uncoupling protein, uncoupling protein 1

**Official Symbol:** UCP1

**Accession Number(s):** NP\_068605.1

**Human GeneID(s):** [7350](#)

### Immunogen

Peptide with sequence C-EQLKRELSKSRQ, from the C Terminus of the protein sequence according to NP\_068605.1.

Please note the [peptide](#) is available for sale.

### Purification and Storage

Purified from goat serum by ammonium sulphate precipitation followed by antigen affinity chromatography using the immunizing peptide.

Supplied at 0.5 mg/ml in Tris saline, 0.02% sodium azide, pH7.3 with 0.5% bovine serum albumin.

Aliquot and store at -20°C. Minimize freezing and thawing.

### Applications Tested

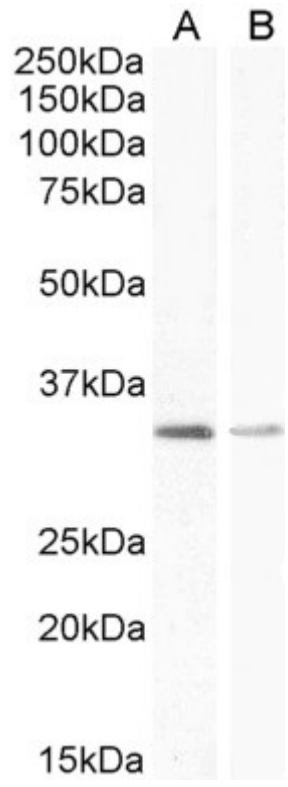
**Peptide ELISA:** antibody detection limit dilution 1:128000.

**Western blot:** Approx 35kDa band observed in Rat Adipose tissue and Skeletal Muscle lysates (calculated MW of 33.2kDa according to Rat NP\_036814.1). Recommended concentration: 0.5-1 µg/ml. . Primary incubation 1 hour at room temperature.

### Species Reactivity

**Tested:** Rat

**Expected from sequence similarity:** Human, Mouse, Rat, Dog



EB06994 (1 $\mu$ g/ml) staining of Rat Adipose (A) and (0.5 $\mu$ g/ml) Skeletal Muscle (B) lysate (35 $\mu$ g protein in RIPA buffer) Detected by chemiluminescence.