



UK Office

Everest Biotech Ltd

Cherwell Innovation Centre
77 Heyford Park
Upper Heyford
Oxfordshire
OX25 5HD
UK

Enquiries:

info@everestbiotech.com

Sales:

sales@everestbiotech.com

Tech support:

support@everestbiotech.com

Tel: +44 (0)1869 238326

www.everestbiotech.com

**Research Use Only. Not for
diagnostic or therapeutic use.**

EB05415 - Goat Anti-UEV1 / CROC1A Antibody

Size: 100µg specific antibody in 200µl



Target Protein

Principal Names: UBE2V1, UEV1, ubiquitin-conjugating enzyme E2 variant 1, CIR1, CROC1A, UBE2V, UEV-1, UEV1A, CROC-1A, DNA-binding protein

Official Symbol: UBE2V1

Accession Number(s): NP_068823.2; NP_954595.1

Human GeneID(s): [7335](#)

Important Comments: This antibody is expected to recognize isoform a (NP_068823.2; NP_954595.1) only.

Immunogen

Peptide with sequence PGEVQASYLKSSQ-C, from the N Terminus of the protein sequence according to NP_068823.2; NP_954595.1.

Please note the [peptide](#) is available for sale.

Purification and Storage

Purified from goat serum by ammonium sulphate precipitation followed by antigen affinity chromatography using the immunizing peptide.

Supplied at 0.5 mg/ml in Tris saline, 0.02% sodium azide, pH7.3 with 0.5% bovine serum albumin.

Aliquot and store at -20°C. Minimize freezing and thawing.

Applications Tested

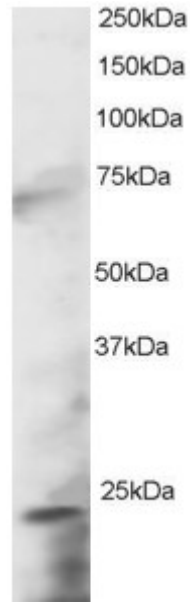
Peptide ELISA: antibody detection limit dilution 1:32000.

Western blot: Approx 18-23kDa band seen in Human Brain lysate. Recommended for use at 0.2-1µg/ml.

Species Reactivity

Tested: Human

Expected from sequence similarity: Human



EB05415 staining (0.5 μ g/ml) of Human Brain lysate (RIPA buffer, 30 μ g total protein per lane). Primary incubated for 1 hour. Detected by western blot using chemiluminescence.