



## UK Office

### Everest Biotech Ltd

Cherwell Innovation Centre  
77 Heyford Park  
Upper Heyford  
Oxfordshire  
OX25 5HD  
UK

Enquiries:

[info@everestbiotech.com](mailto:info@everestbiotech.com)

Sales:

[sales@everestbiotech.com](mailto:sales@everestbiotech.com)

Tech support:

[support@everestbiotech.com](mailto:support@everestbiotech.com)

Tel: +44 (0)1869 238326

Fax: +44 (0)1869 238327

## US Office

### Everest Biotech c/o Abcore

405 Maple Street, Suite A106  
Ramona,  
CA 92065  
USA

Inquiries:

[info@everestbiotech.com](mailto:info@everestbiotech.com)

Sales:

[usasales@everestbiotech.com](mailto:usasales@everestbiotech.com)

Tech support:

[support@everestbiotech.com](mailto:support@everestbiotech.com)

Tel: 888-320-4628 (toll-free)

Fax: 888-841-9041

[www.everestbiotech.com](http://www.everestbiotech.com)

**Research Use Only. Not for  
diagnostic or therapeutic use.**

## EB05992 - Goat Anti-USP16 / UBP-M Antibody

Size: 100µg specific antibody in 200µl



### Target Protein

**Principal Names:** USP16, ubiquitin specific protease 16, Ubp-M, human ubiquitin processing protease, ubiquitin specific peptidase 16, UBP-M, deubiquitinating enzyme 16, ubiquitin carboxyl-terminal hydrolase 16, ubiquitin thiolesterase 16, ubiquitin-specific processing protease 16

**Official Symbol:** USP16

**Accession Number(s):** NP\_006438.1; NP\_001001992.1

**Human GeneID(s):** [10600](#)

**Important Comments:** This antibody is expected to recognise isoform a (NP\_006438.1) and isoform b (NP\_001001992.1). Reported variants represent identical protein (NP\_006438.1; NP\_001027582.1).

### Immunogen

Peptide with sequence GKKRTKGKTVPIDD-C, from the N Terminus of the protein sequence according to NP\_006438.1; NP\_001001992.1.

Please note the [peptide](#) is available for sale.

### Purification and Storage

Purified from goat serum by ammonium sulphate precipitation followed by antigen affinity chromatography using the immunizing peptide.

Supplied at 0.5 mg/ml in Tris saline, 0.02% sodium azide, pH7.3 with 0.5% bovine serum albumin.

Aliquot and store at -20°C. Minimize freezing and thawing.

### Applications Tested

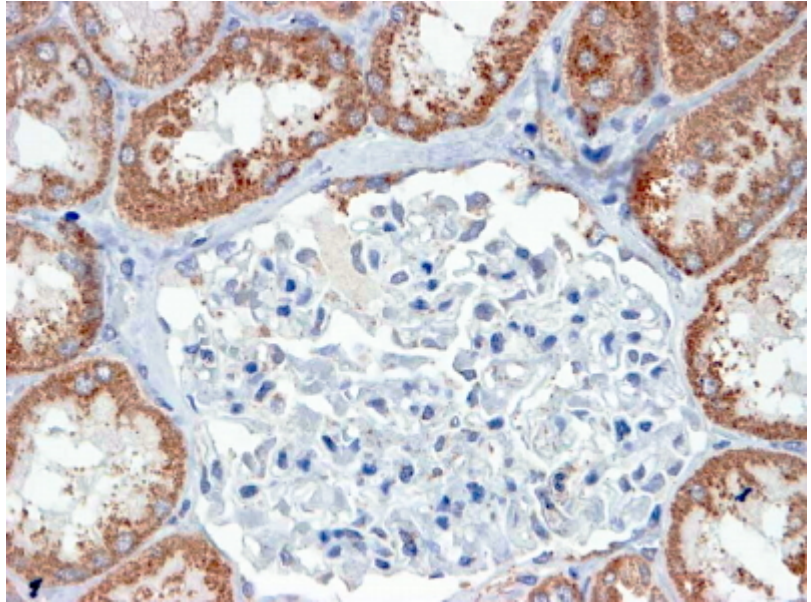
**Peptide ELISA:** antibody detection limit dilution 1:32000.

**IHC:** In paraffin embedded Human Kidney shows textured cytoplasm staining in the convoluted tubules. Recommended concentration, 4-6µg/ml.

### Species Reactivity

**Tested:** Human

**Expected from sequence similarity:** Human, Mouse, Rat, Dog, Pig, Cow



EB05992 (4µg/ml) staining of paraffin embedded Human Human Kidney. Steamed antigen retrieval with Tris/EDTA buffer pH 9, HRP-staining.