



UK Office

Everest Biotech Ltd

Cherwell Innovation Centre
77 Heyford Park
Upper Heyford
Oxfordshire
OX25 5HD
UK

Enquiries:

info@everestbiotech.com

Sales:

sales@everestbiotech.com

Tech support:

support@everestbiotech.com

Tel: +44 (0)1869 238326

Fax: +44 (0)1869 238327

US Office

Everest Biotech c/o Abcore

405 Maple Street, Suite A106
Ramona,
CA 92065
USA

Inquiries:

info@everestbiotech.com

Sales:

usasales@everestbiotech.com

Tech support:

support@everestbiotech.com

Tel: 888-320-4628 (toll-free)

Fax: 888-841-9041

www.everestbiotech.com

**Research Use Only. Not for
diagnostic or therapeutic use.**

EB05997 - Goat Anti-USP20 / VDU2 Antibody

Size: 100µg specific antibody in 200µl



Target Protein

Principal Names: USP20, VDU2, ubiquitin specific protease 20, KIAA1003, pVHL-interacting deubiquitinating enzyme 2, ubiquitin specific peptidase 20, LSFR3A

Official Symbol: USP20

Accession Number(s): NP_006667.3

Human GeneID(s): [10868](#)

Non-Human GeneID(s): 74270 (mouse)

Important Comments: Reported variants represent identical protein (NP_006667.3; NP_001103773.2; NP_001008563.2).

Immunogen

Peptide with sequence C-HGEQKIEAETRAV, from the C Terminus of the protein sequence according to NP_006667.3.

Please note the [peptide](#) is available for sale.

Purification and Storage

Purified from goat serum by ammonium sulphate precipitation followed by antigen affinity chromatography using the immunizing peptide.

Supplied at 0.5 mg/ml in Tris saline, 0.02% sodium azide, pH7.3 with 0.5% bovine serum albumin.

Aliquot and store at -20°C. Minimize freezing and thawing.

Applications Tested

Peptide ELISA: antibody detection limit dilution 1:4000.

Western blot: Approx 100kDa band observed in Human Tonsil lysates (calculated MW of 102kDa according to NP_006667.3). Recommended concentration: 1-3µg/ml.

IHC: In paraffin embedded Human Lymph Node shows strongest staining in smooth muscle cells surrounding a vessel. Data obtained from a previous batch (different goat). Recommended concentration, 3 µg/ml.

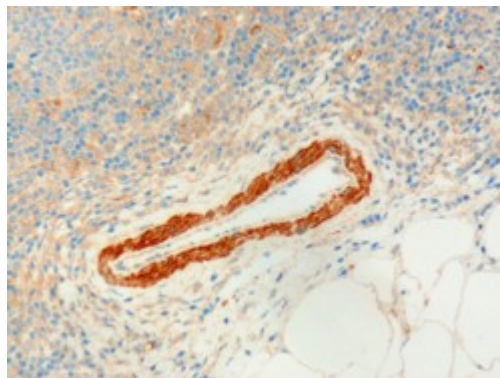
Species Reactivity

Tested: Human

Expected from sequence similarity: Human, Mouse, Rat, Dog, Pig, Cow



EB05997 (1 μ g/ml) staining of Human Tonsil lysate (35 μ g protein in RIPA buffer). Primary incubation was 1 hour.
Detected by chemiluminescence.



EB05997 (3 μ g/ml) staining of paraffin embedded Human Lymph Node. Microwaved antigen retrieval with Tris/EDTA buffer pH9, HRP-staining.