



## International Office

### Everest Biotech Ltd

Vector Laboratories, Inc.  
6737 Mowry Ave  
Newark, CA 94560  
United States

Customer Service:

[customerservice@vectorlabs.com](mailto:customerservice@vectorlabs.com)

Technical Service:

[technical@vectorlabs.com](mailto:technical@vectorlabs.com)

Tel: +1 (800) 227-6666

[www.everestbiotech.com](http://www.everestbiotech.com)

**Research Use Only. Not for  
diagnostic or therapeutic use.**

## EB08665 - Goat Anti-USP31 Antibody

Size: 100µg specific antibody in 200µl



### Target Protein

**Principal Names:** USP31, ubiquitin specific peptidase 31, KIAA1203, ubiquitin specific protease 31, ubiquitin specific proteinase 31

**Official Symbol:** USP31

**Accession Number(s):** NP\_065769.3

**Human GeneID(s):** [57478](#)

### Immunogen

Peptide with sequence CKNTGDDEAERGHQ, from the internal region of the protein sequence according to NP\_065769.3.

Please note the [peptide](#) is available for sale.

### Purification and Storage

Purified from goat serum by ammonium sulphate precipitation followed by antigen affinity chromatography using the immunizing peptide.

Supplied at 0.5 mg/ml in Tris saline, 0.02% sodium azide, pH7.3 with 0.5% bovine serum albumin.

Aliquot and store at -20°C. Minimize freezing and thawing.

### Applications Tested

**Peptide ELISA:** antibody detection limit dilution 1:8000.

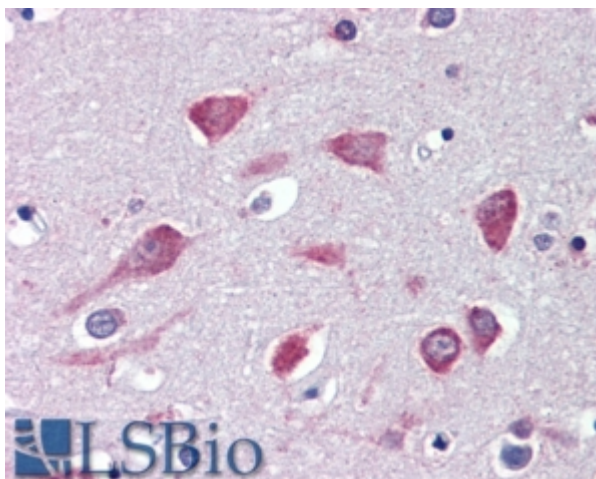
**IHC:** In paraffin embedded Human Cortex shows cellular body staining of neurons.

Recommended concentration, 3-5µg/ml.

### Species Reactivity

**Tested:** Human

**Expected from sequence similarity:** Human



EB08665 (3.8µg/ml) staining of paraffin embedded Human Cortex. Steamed antigen retrieval with citrate buffer pH 6, AP-staining.