



UK Office

Everest Biotech Ltd

Cherwell Innovation Centre
77 Heyford Park
Upper Heyford
Oxfordshire
OX25 5HD
UK

Enquiries:

info@everestbiotech.com

Sales:

sales@everestbiotech.com

Tech support:

support@everestbiotech.com

Tel: +44 (0)1869 238326

Fax: +44 (0)1869 238327

US Office

Everest Biotech c/o Abcore

405 Maple Street, Suite A106
Ramona,
CA 92065
USA

Inquiries:

info@everestbiotech.com

Sales:

usasales@everestbiotech.com

Tech support:

support@everestbiotech.com

Tel: 888-320-4628 (toll-free)

Fax: 888-841-9041

www.everestbiotech.com

**Research Use Only. Not for
diagnostic or therapeutic use.**

EB06324 - Goat Anti-VDAC2 (C Terminus) Antibody

Size: 100µg specific antibody in 200µl



Target Protein

Principal Names: VDAC2, voltage-dependent anion channel 2, RP11-375G3.1, FLJ23841

Official Symbol: VDAC2

Accession Number(s): NP_003366.2

Human GeneID(s): [7417](#)

Immunogen

Peptide with sequence C-GHKVGLALELEA, from the C Terminus of the protein sequence according to NP_003366.2.

Please note the [peptide](#) is available for sale.

Purification and Storage

Purified from goat serum by ammonium sulphate precipitation followed by antigen affinity chromatography using the immunizing peptide.

Supplied at 0.5 mg/ml in Tris saline, 0.02% sodium azide, pH7.3 with 0.5% bovine serum albumin.

Aliquot and store at -20°C. Minimize freezing and thawing.

Applications Tested

Peptide ELISA: antibody detection limit dilution 1:8000.

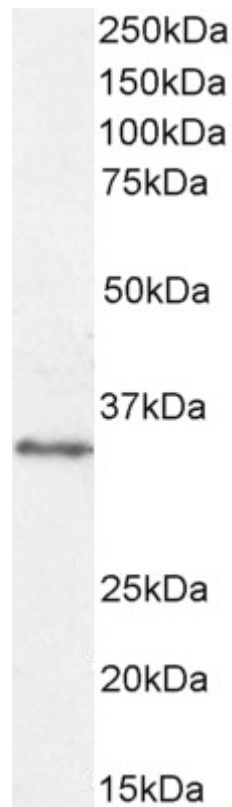
Western blot: Approx 35kDa band observed in Human Cerebellum and in lysates of cell lines CaCo-2 and LNCaP (calculated MW of 31.6kDa according to Human NP_003366.2). Recommended concentration: 0.3-1µg/ml. Primary incubation 1 hour at room temperature.

IHC: Paraffin embedded Rat Liver. Recommended concentration: 5-6µg/ml.

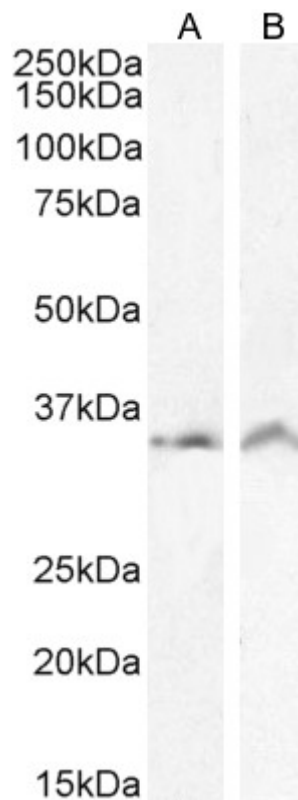
Species Reactivity

Tested: Human, Rat

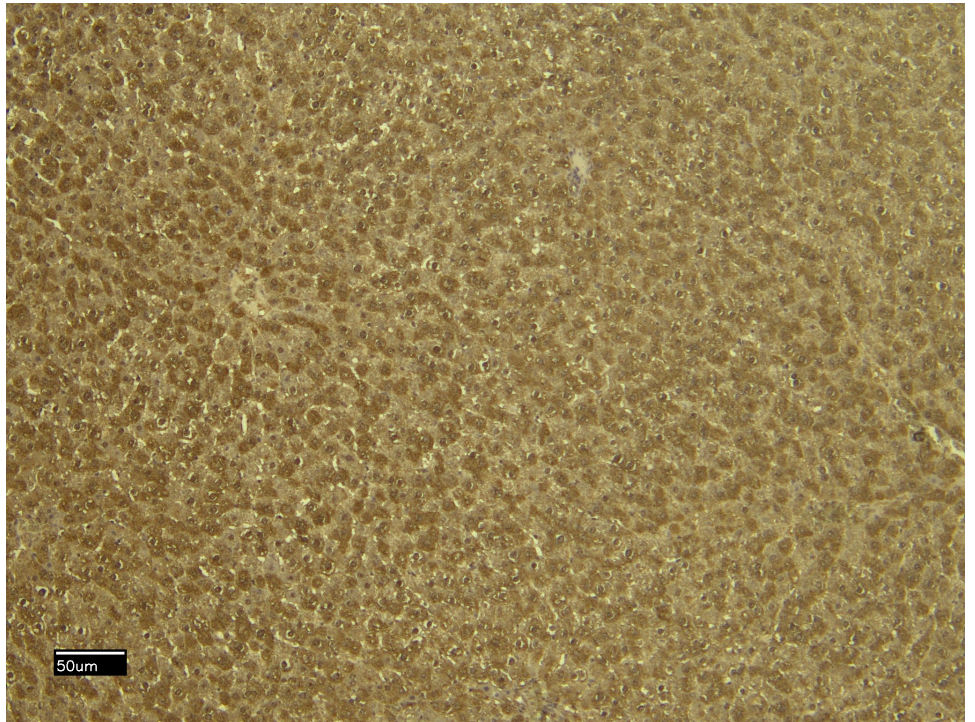
Expected from sequence similarity: Human, Mouse, Rat, Dog, Pig, Cow



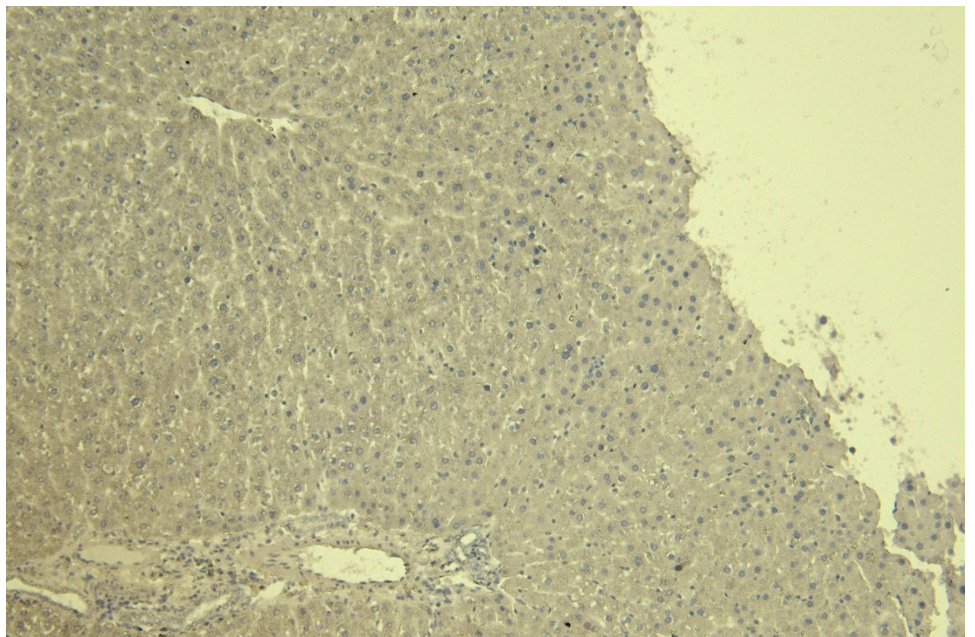
EB06324 (0.3µg/ml) staining of Human Cerebellum lysate (35µg protein in RIPA buffer). Detected by chemiluminescence.



EB06324 (1ug/ml) staining of CaCo-2 (A) and (0.5ug/ml) LNCaP (B) cell lysate (35µg protein in RIPA buffer). Detected by chemiluminescence.



EB06324 (6µg/ml) staining of paraffin embedded Rat Liver. Heat induced antigen retrieval with citrate buffer pH 6, HRP-staining.



EB06324 Negative Control showing staining of paraffin embedded Rat Liver, with no primary antibody.