

## UK Office

### Everest Biotech Ltd

Cherwell Innovation Centre  
77 Heyford Park  
Upper Heyford  
Oxfordshire  
OX25 5HD  
UK

Enquiries:

[info@everestbiotech.com](mailto:info@everestbiotech.com)

Sales:

[sales@everestbiotech.com](mailto:sales@everestbiotech.com)

Tech support:

[support@everestbiotech.com](mailto:support@everestbiotech.com)

Tel: +44 (0)1869 238326

[www.everestbiotech.com](http://www.everestbiotech.com)

**Research Use Only. Not for  
diagnostic or therapeutic use.**

## EB07409 - Goat Anti-VDAC2 (Internal) Antibody

Size: 100µg specific antibody in 200µl



### Target Protein

**Principal Names:** VDAC2, voltage-dependent anion channel 2, RP11-375G3.1, FLJ23841

**Official Symbol:** VDAC2

**Accession Number(s):** NP\_003366.2

**Human GeneID(s):** [7417](#)

**Non-Human GeneID(s):** 22334 (mouse)

### Immunogen

Peptide with sequence C-DSAKSKLTRNN, from the internal region of the protein sequence according to NP\_003366.2.

Please note the [peptide](#) is available for sale.

### Purification and Storage

Purified from goat serum by ammonium sulphate precipitation followed by antigen affinity chromatography using the immunizing peptide.

Supplied at 0.5 mg/ml in Tris saline, 0.02% sodium azide, pH7.3 with 0.5% bovine serum albumin.

Aliquot and store at -20°C. Minimize freezing and thawing.

### Applications Tested

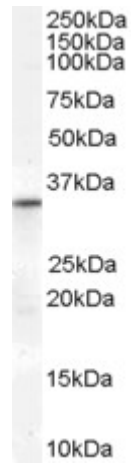
**Peptide ELISA:** antibody detection limit dilution 1:64000.

**Western blot:** Approx 32kDa band observed in Human Heart lysates (calculated MW of 31.6 kDa according to NP\_003366.2). Recommended concentration: 0.3-1µg/ml.

### Species Reactivity

**Tested:** Human

**Expected from sequence similarity:** Human, Mouse, Rat, Dog



EB07409 (0.3 $\mu$ g/ml) staining of Human Heart lysate (35 $\mu$ g protein in RIPA buffer). Primary incubation was 1 hour. Detected by chemiluminescence.