



UK Office

Everest Biotech Ltd

Cherwell Innovation Centre
77 Heyford Park
Upper Heyford
Oxfordshire
OX25 5HD
UK

Enquiries:

info@everestbiotech.com

Sales:

sales@everestbiotech.com

Tech support:

support@everestbiotech.com

Tel: +44 (0)1869 238326

www.everestbiotech.com

**Research Use Only. Not for
diagnostic or therapeutic use.**

EB06803-T - Goat Anti-VDR Antibody - Trial

Size: 20µg specific antibody in 40µl



Target Protein

Principal Names: VDR, vitamin D (1,25- dihydroxyvitamin D3) receptor, HGNC:12679, NR111, vitamin D (1,25-dihydroxyvitamin D3) receptor

Official Symbol: VDR

Accession Number(s): NP_000367.1; NP_001017535.1;
NP_001351014.1;NP_001017536.1

Human GeneID(s): [7421](#)

Non-Human GeneID(s): 22337 (mouse), 24873 (rat)

Immunogen

Peptide with sequence CGNQDYKYRVSD, from the internal region of the protein sequence according to NP_000367.1; NP_001017535.1; NP_001351014.1;NP_001017536.1.

Please note the [peptide](#) is available for sale.

Purification and Storage

Purified from goat serum by ammonium sulphate precipitation followed by antigen affinity chromatography using the immunizing peptide.

Supplied at 0.5 mg/ml in Tris saline, 0.02% sodium azide, pH7.3 with 0.5% bovine serum albumin.

Aliquot and store at -20°C. Minimize freezing and thawing.

Applications Tested

Peptide ELISA: antibody detection limit dilution 1:16000.

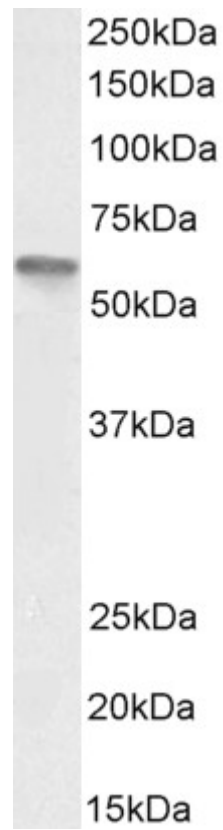
Western blot: Approx 55kDa band observed in Human Placenta and Duodenum lysates and approx. 55-60kDa in lysates of cell line U937 (calculated MW of 55.2kDa according to NP_001351014.1). Recommended concentration: 2-3µg/ml. Primary incubation 1 hour at room temperature.

Flow Cytometry: Flow cytometric analysis of U937 cells. Recommended concentration: 10ug/ml.

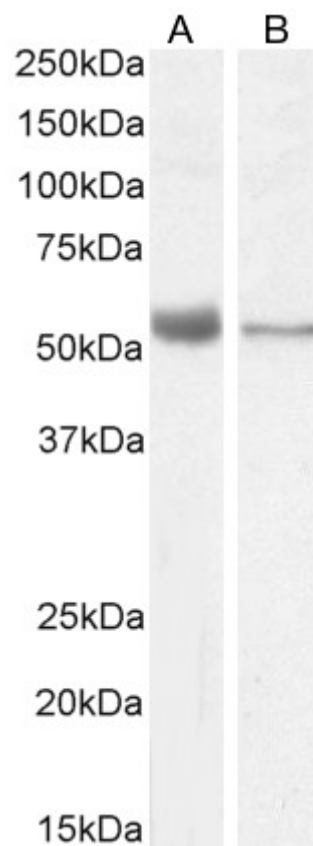
Species Reactivity

Tested: Human

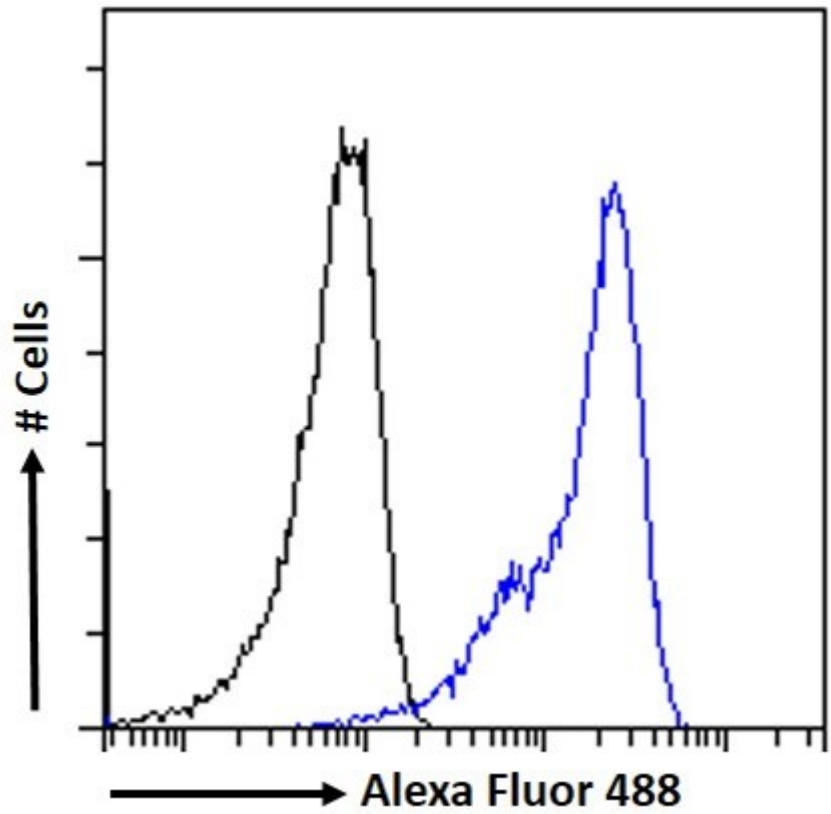
Expected from sequence similarity: Human, Mouse, Rat, Dog



EB06803 (3 μ g/ml) staining of U937 cell lysate (35 μ g protein in RIPA buffer). Detected by chemiluminescence.



EB06803 (3 μ g/ml) staining of Human Placenta (A) and (2 μ g/ml) Duodenum (B) lysate (35 μ g protein in RIPA buffer). Detected by chemiluminescence.



EB06803 Flow cytometric analysis of paraformaldehyde fixed U937 cells (blue line), permeabilized with 0.5% Triton. Primary incubation 1hr (10ug/ml) followed by Alexa Fluor 488 secondary antibody (1ug/ml). IgG control: Unimmunized goat IgG (black line) followed by Alexa Fluor 488 secondary antibody.