



## UK Office

### Everest Biotech Ltd

Cherwell Innovation Centre  
77 Heyford Park  
Upper Heyford  
Oxfordshire  
OX25 5HD  
UK

Enquiries:

[info@everestbiotech.com](mailto:info@everestbiotech.com)

Sales:

[sales@everestbiotech.com](mailto:sales@everestbiotech.com)

Tech support:

[support@everestbiotech.com](mailto:support@everestbiotech.com)

Tel: +44 (0)1869 238326

Fax: +44 (0)1869 238327

## US Office

### Everest Biotech c/o Abcore

405 Maple Street, Suite A106  
Ramona,  
CA 92065  
USA

Inquiries:

[info@everestbiotech.com](mailto:info@everestbiotech.com)

Sales:

[usasales@everestbiotech.com](mailto:usasales@everestbiotech.com)

Tech support:

[support@everestbiotech.com](mailto:support@everestbiotech.com)

Tel: 888-320-4628 (toll-free)

Fax: 888-841-9041

[www.everestbiotech.com](http://www.everestbiotech.com)

**Research Use Only. Not for  
diagnostic or therapeutic use.**

## EB11747 - Goat Anti-VEGFA (aa288-299) Antibody

Size: 100µg specific antibody in 200µl



### Target Protein

**Principal Names:** MGC70609, MVCD1, OTTHUMP00000016487, OTTHUMP00000016488, OTTHUMP000000165985, OTTHUMP000000165986, OTTHUMP000000165987, OTTHUMP000000224107, OTTHUMP000000224108, OTTHUMP000000224109, OTTHUMP000000224153, OTTHUMP000000224154, OTTHUMP000000224423, OTTHUMP000000224424, OTTHUMP000000224425, OTTHUMP000000224426, OTTHUMP000000224427, OTTHUMP000000224428, OTTHUMP000000224429, OTTHUMP000000224430, vascular endothelial growth factor A, vascular permeability factor, VEGF, VEGFA, VPF

**Official Symbol:** VEGFA

**Accession Number(s):** NP\_001020537.2; NP\_003367.4; NP\_001020538.2; NP\_001020539.2; etc.

**Human GeneID(s):** [7422](#)

**Important Comments:** This antibody is expected to recognize all reported isoforms.

### Immunogen

Peptide with sequence C-RIKPHQGGHIGE, from the internal region of the protein sequence according to NP\_001020537.2; NP\_003367.4; NP\_001020538.2; NP\_001020539.2; etc..

Please note the [peptide](#) is available for sale.

### Purification and Storage

Purified from goat serum by ammonium sulphate precipitation followed by antigen affinity chromatography using the immunizing peptide.

Supplied at 0.5 mg/ml in Tris saline, 0.02% sodium azide, pH7.3 with 0.5% bovine serum albumin.

Aliquot and store at -20°C. Minimize freezing and thawing.

### Applications Tested

**Peptide ELISA:** antibody detection limit dilution 1:128000.

**Western blot:** Approx 45kDa band observed in lysates of cell line HEK293 (calculated MW of 45.5kDa according to NP\_001020537.2). Recommended concentration: 0.1-0.3µg/ml. Primary incubation was 1 hour. Preliminary testing was unsuccessful on Mouse and Rat (Liver, Kidney and Lung) for this particular batch.

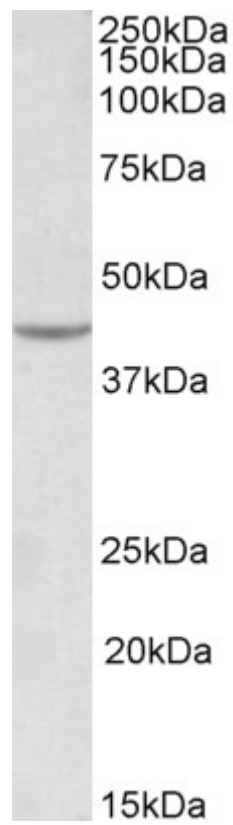
**IHC:** Paraffin embedded Human Liver and Small Intestine. Recommended concentration: 5µg/ml.

**Immunofluorescence:** Testing has shown that this antibody stains mitochondria in Mouse NIH3T3 cells at 10µg/ml.

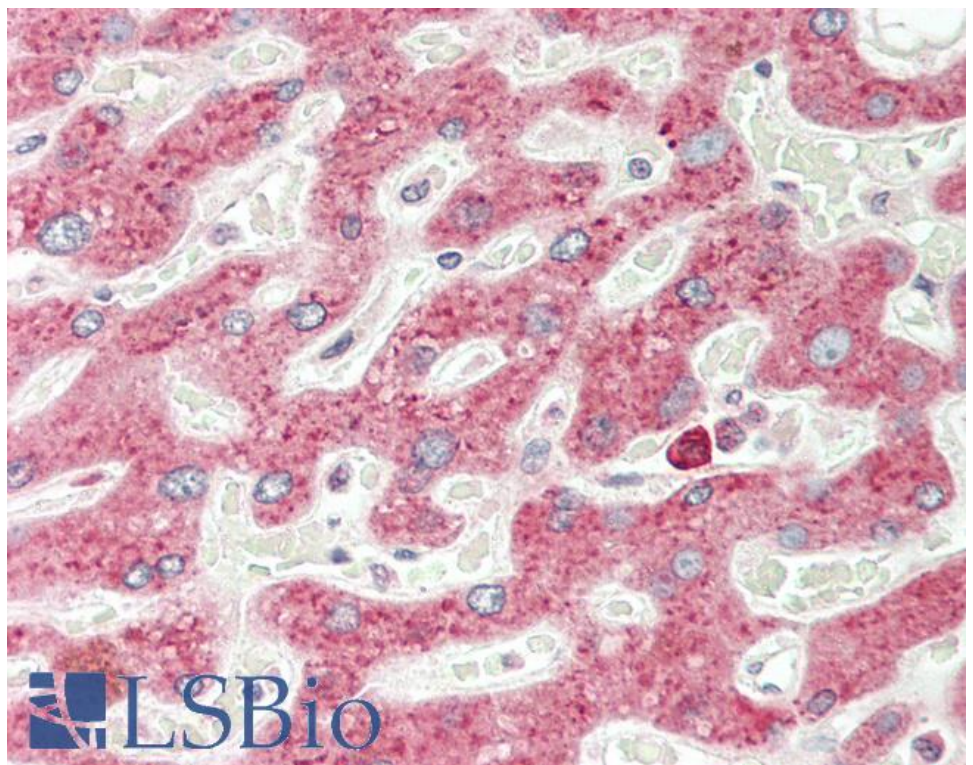
### Species Reactivity

**Tested:** Human

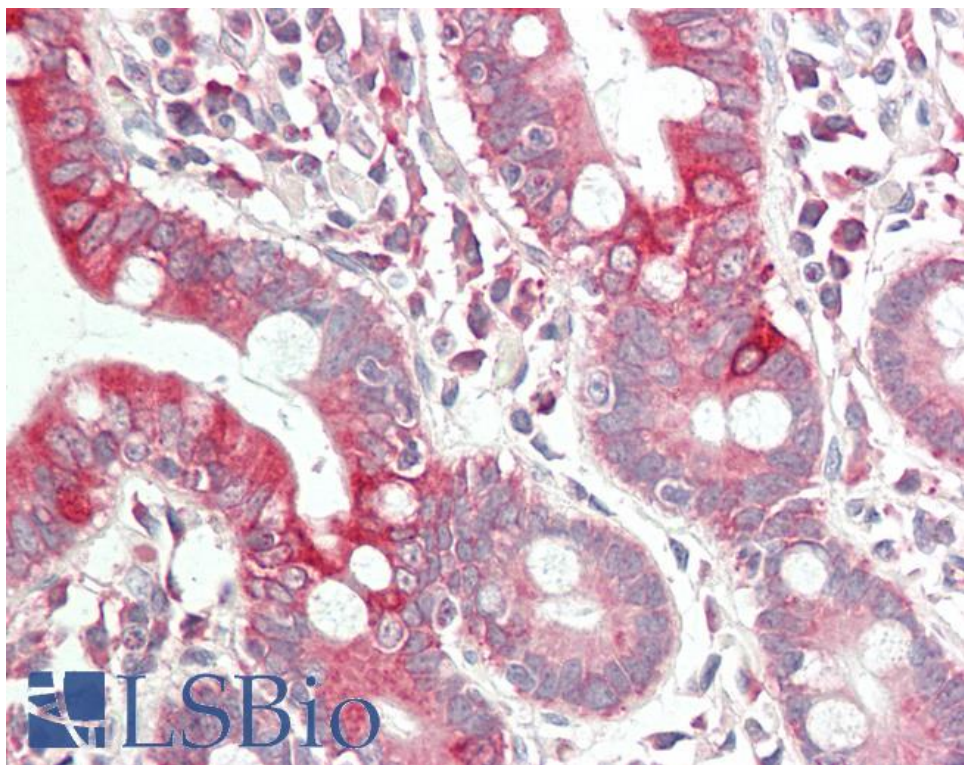
**Expected from sequence similarity:** Human, Dog, Pig



EB11747 (0.1 µg/ml) staining of HEK293 lysate (35 µg protein in RIPA buffer). Detected by chemiluminescence.



EB11747 (5 µg/ml) staining of paraffin embedded Human Liver. Steamed antigen retrieval with citrate buffer pH 6, AP-staining.



EB11747 (5µg/ml) staining of paraffin embedded Human Small Intestine. Steamed antigen retrieval with citrate buffer pH 6, AP-staining.