



UK Office

Everest Biotech Ltd

Cherwell Innovation Centre
77 Heyford Park
Upper Heyford
Oxfordshire
OX25 5HD
UK

Enquiries:

info@everestbiotech.com

Sales:

sales@everestbiotech.com

Tech support:

support@everestbiotech.com

Tel: +44 (0)1869 238326

Fax: +44 (0)1869 238327

US Office

Everest Biotech c/o Abcore

405 Maple Street, Suite A106
Ramona,
CA 92065
USA

Inquiries:

info@everestbiotech.com

Sales:

usasales@everestbiotech.com

Tech support:

support@everestbiotech.com

Tel: 888-320-4628 (toll-free)

Fax: 888-841-9041

www.everestbiotech.com

**Research Use Only. Not for
diagnostic or therapeutic use.**

EB11645 - Goat Anti-VEGFA (aa387-399) Antibody

Size: 100µg specific antibody in 200µl



Target Protein

Principal Names: MGC70609, MVCD1, OTTHUMP00000016487,

OTTHUMP00000016488, OTTHUMP00000165985, OTTHUMP00000165986,
OTTHUMP00000165987, OTTHUMP00000224107, OTTHUMP00000224108,
OTTHUMP00000224109, OTTHUMP00000224153, OTTHUMP00000224154,
OTTHUMP00000224423, OTTHUMP00000224424, OTTHUMP00000224425,
OTTHUMP00000224426, OTTHUMP00000224427, OTTHUMP00000224428,
OTTHUMP00000224429, OTTHUMP00000224430, vascular endothelial growth factor A,
vascular permeability factor, VEGF, VEGFA, VPF

Official Symbol: VEGFA

Accession Number(s): NP_001020537.2; NP_003367.4; NP_001020538.2;
NP_001020539.2; NP_001028928.1; NP_001165094.1; NP_001165095.1;
NP_001165096.1; NP_001165097.1; NP_001165100.1

Human GeneID(s): [7422](#)

Non-Human GeneID(s): 22339 (mouse), 83785 (rat)

Important Comments: This antibody is expected to recognize following isoforms: a (45.5kDa), b (43.6kDa), c (42.8kDa), d (40.7kDa), g (40.6kDa), i (27.0kDa), j (25.2kDa), k (24.4kDa), o (22.3kDa) and s (18.9kDa)

Immunogen

Peptide with sequence KNTDSRCKARQLE, from the C Terminus of the protein sequence according to NP_001020537.2; NP_003367.4; NP_001020538.2; NP_001020539.2; NP_001028928.1; NP_001165094.1; NP_001165095.1; NP_001165096.1; NP_001165097.1; NP_001165100.1.

Please note the [peptide](#) is available for sale.

Purification and Storage

Purified from goat serum by ammonium sulphate precipitation followed by antigen affinity chromatography using the immunizing peptide.

Supplied at 0.5 mg/ml in Tris saline, 0.02% sodium azide, pH7.3 with 0.5% bovine serum albumin.

Aliquot and store at -20°C. Minimize freezing and thawing.

Applications Tested

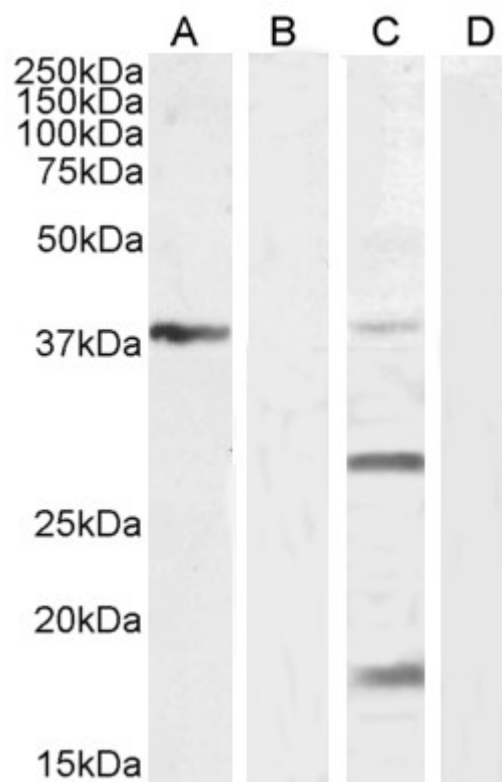
Peptide ELISA: antibody detection limit dilution 1:128000.

Western blot: Approx 38kDa band observed in Mouse Liver lysates, 38+28+18kDa in Human Kidney lysates and approx 18kDa in lysates of cell line K562 (calculated MW of 40.3kDa according to Mouse NP_033531.3, 40.6kDa according to Human NP_001028928.1, 27.0kDa according to Human NP_001165094.1 and 18.9kDa according to Human NP_001273973.1). These bands were all successfully blocked by incubation with the immunizing peptide.. Recommended concentration: 0.3-1µg/ml. Primary incubation 1 hour at room temperature.

Species Reactivity

Tested: Human, Mouse

Expected from sequence similarity: Human, Mouse, Rat, Cat, Dog, Pig, Cow



EB11645 (1 μ g/ml) staining of Mouse Liver lysate (A) + Peptide (B), Human Kidney lysate (C) + Peptide (D) (35 μ g protein in RIPA buffer) Detected by chemiluminescence.



EB11645 (1 μ g/ml) staining of K562 cell lysate (A) + Peptide (B) (35 μ g protein in RIPA buffer). Detected by chemiluminescence.