



UK Office

Everest Biotech Ltd

Cherwell Innovation Centre
77 Heyford Park
Upper Heyford
Oxfordshire
OX25 5HD
UK

Enquiries:

info@everestbiotech.com

Sales:

sales@everestbiotech.com

Tech support:

support@everestbiotech.com

Tel: +44 (0)1869 238326

Fax: +44 (0)1869 238327

US Office

Everest Biotech c/o Abcore

405 Maple Street, Suite A106
Ramona,
CA 92065
USA

Inquiries:

info@everestbiotech.com

Sales:

usasales@everestbiotech.com

Tech support:

support@everestbiotech.com

Tel: 888-320-4628 (toll-free)

Fax: 888-841-9041

www.everestbiotech.com

**Research Use Only. Not for
diagnostic or therapeutic use.**

EB08600 - Goat Anti-VGLUT1 Antibody

Size: 100µg specific antibody in 200µl



Target Protein

Principal Names: SLC17A7, solute carrier family 17 (sodium-dependent inorganic phosphate cotransporter), member 7, BNPI, VGLUT1, brain-specific Na-dependent inorganic phosphate cotransporter, solute carrier family 17, member 7, vesicular glutamate transporter 1

Official Symbol: SLC17A7

Accession Number(s): NP_064705.1

Human GeneID(s): [57030](#)

Immunogen

Peptide with sequence C-HDQLAGSDDSEMED, from the internal region of the protein sequence according to NP_064705.1.

Please note the [peptide](#) is available for sale.

Purification and Storage

Purified from goat serum by ammonium sulphate precipitation followed by antigen affinity chromatography using the immunizing peptide.

Supplied at 0.5 mg/ml in Tris saline, 0.02% sodium azide, pH7.3 with 0.5% bovine serum albumin.

Aliquot and store at -20°C. Minimize freezing and thawing.

Applications Tested

Peptide ELISA: antibody detection limit dilution 1:32000.

IHC: In paraffin embedded Human Cortex shows vesicular staining amongst the many axons and dendrites. Paraffin embedded Human Adrenal Cortex. Recommended concentration: 3.75µg/ml. In paraffin embedded Mouse Brain shows staining of the periphery of the ventromedial nucleus in the hypothalamus Recommended concentration: 0.3-1µg/ml.

Immunofluorescence: This antibody has been successfully used in IF on Human, PMID: 28455787.

Species Reactivity

Tested: Human, Mouse

Expected from sequence similarity: Human, Mouse, Rat, Dog, Cow

Specific Reference

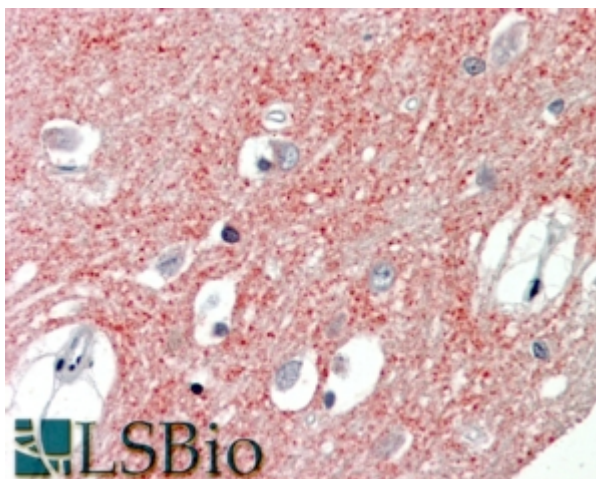
This antibody has been successfully used in IF on Human:

Lu-Kang Wang, Xin Chen, Chun-Qing Zhang, Chao Liang, Yu-Jia Wei, Jiong Yue, Shi-Yong Liu, Hui Yang

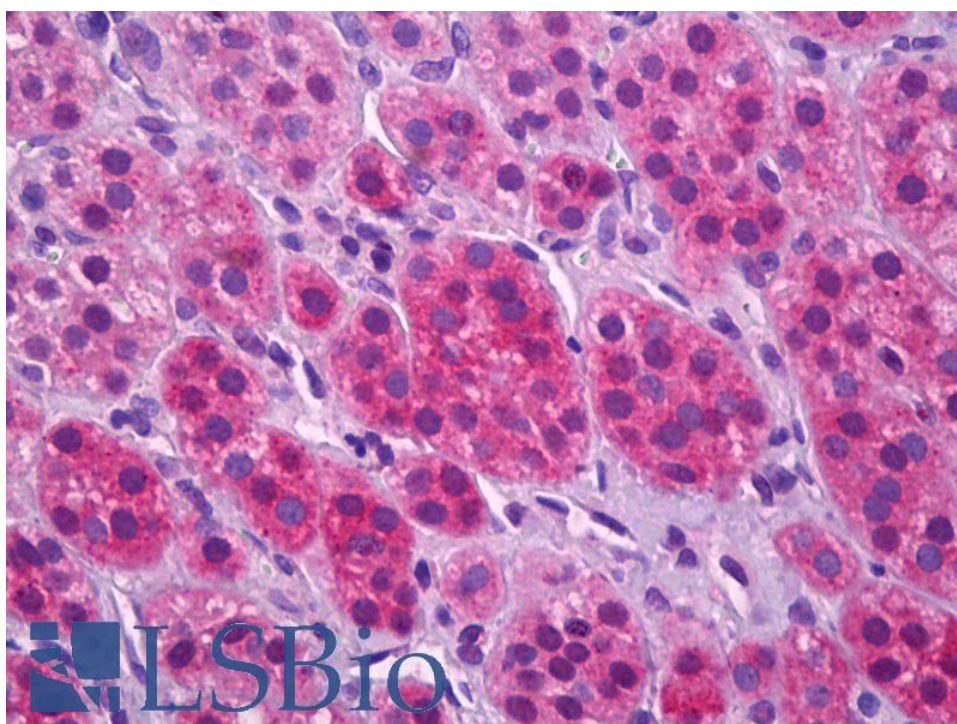
Elevated Expression of TRPC4 in Cortical Lesions of Focal Cortical Dysplasia II and Tuberous Sclerosis Complex

J Mol Neurosci. 2017 Jun;62(2):222-231.

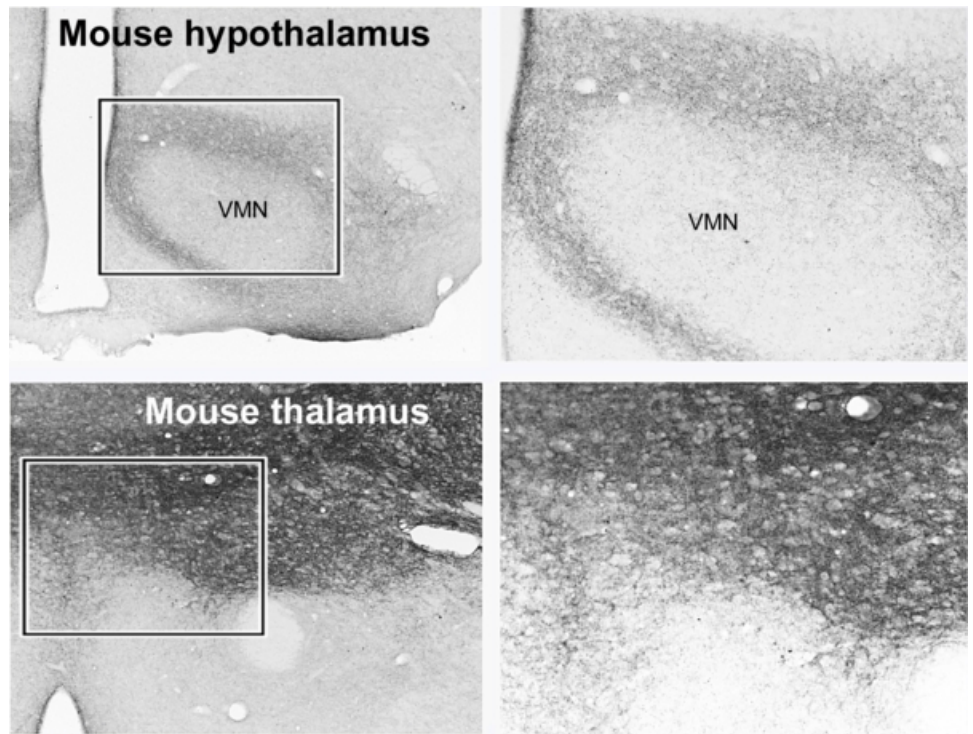
PMID: 28455787



EB08600 (3.75µg/ml) staining of paraffin embedded Human Cortex. Steamed antigen retrieval with citrate buffer pH 6, AP-staining.



EB08600 (3.75µg/ml) staining of paraffin embedded Human Adrenal Cortex. Steamed antigen retrieval with citrate buffer pH 6, AP-staining.



EB08600 (0.25 μ g/ml) staining of paraffin embedded Mouse Hypothalamus and Thalamus. Antigen retrieval at 80C for 30min with citrate buffer pH 6, HRP-staining (data kindly provided by Dr. E. Hrabovszky, Budapest, Hungary)