

## UK Office

### Everest Biotech Ltd

Cherwell Innovation Centre  
77 Heyford Park  
Upper Heyford  
Oxfordshire  
OX25 5HD  
UK

Enquiries:

[info@everestbiotech.com](mailto:info@everestbiotech.com)

Sales:

[sales@everestbiotech.com](mailto:sales@everestbiotech.com)

Tech support:

[support@everestbiotech.com](mailto:support@everestbiotech.com)

Tel: +44 (0)1869 238326

[www.everestbiotech.com](http://www.everestbiotech.com)

**Research Use Only. Not for  
diagnostic or therapeutic use.**

## EB07333-T - Goat Anti-VHL Antibody - Trial

Size: 20µg specific antibody in 40µl



### Target Protein

**Principal Names:** VHL, von Hippel-Lindau tumor suppressor, E3 ubiquitin protein ligase, HRCA1, RCA1, VHL1, elongin binding protein, protein G7, pVHL

**Official Symbol:** VHL

**Accession Number(s):** NP\_000542.1; NP\_937799.1

**Human GeneID(s):** [7428](#)

**Non-Human GeneID(s):** 22346 (mouse), 24874 (rat)

**Important Comments:** This antibody is expected to recognise both reported isoforms (NP\_000542.1 and NP\_937799.1).

### Immunogen

Peptide with sequence C-RSLVKPENYRRLD, from the internal region of the protein sequence according to NP\_000542.1; NP\_937799.1.

Please note the [peptide](#) is available for sale.

### Purification and Storage

Purified from goat serum by ammonium sulphate precipitation followed by antigen affinity chromatography using the immunizing peptide.

Supplied at 0.5 mg/ml in Tris saline, 0.02% sodium azide, pH7.3 with 0.5% bovine serum albumin.

Aliquot and store at -20°C. Minimize freezing and thawing.

### Applications Tested

**Peptide ELISA:** antibody detection limit dilution 1:128000.

**Western blot:** Approx 17kDa band observed in Human Ovary and Testis lysates and also in lysates of Mouse and Rat Testis and Brain and of all human and mouse cell lines tested (calculated MW of 19.7kDa according to NP\_937799.1). Recommended concentration: 0.01-0.03µg/ml. Primary incubation was 1 hour.

**IHC:** Paraffin embedded Human Kidney. Recommended concentration: 5µg/ml.

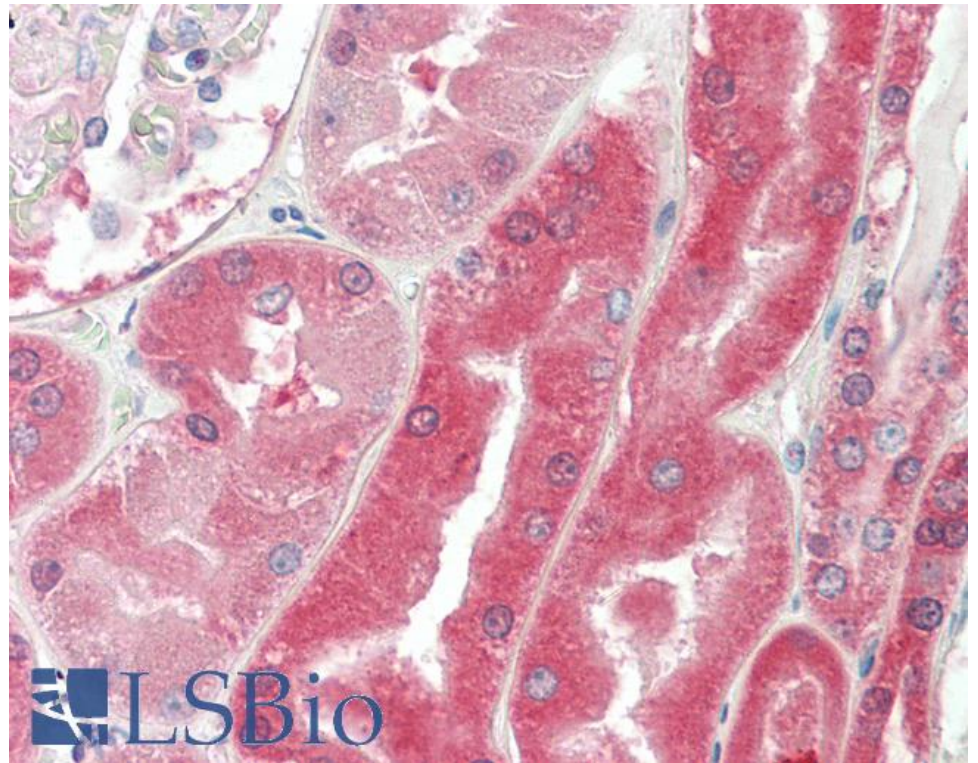
### Species Reactivity

**Tested:** Human, Mouse, Rat

**Expected from sequence similarity:** Human, Mouse, Rat, Dog



EB07333 (0.01 $\mu$ g/ml) staining of Human Ovary lysate (35 $\mu$ g protein in RIPA buffer). Detected by chemiluminescence.



EB07333 (5 $\mu$ g/ml) staining of paraffin embedded Human Kidney. Steamed antigen retrieval with citrate buffer pH 6, AP-staining.