



UK Office

Everest Biotech Ltd

Cherwell Innovation Centre
77 Heyford Park
Upper Heyford
Oxfordshire
OX25 5HD
UK

Enquiries:

info@everestbiotech.com

Sales:

sales@everestbiotech.com

Tech support:

support@everestbiotech.com

Tel: +44 (0)1869 238326

Fax: +44 (0)1869 238327

US Office

Everest Biotech c/o Abcore

405 Maple Street, Suite A106
Ramona,
CA 92065
USA

Inquiries:

info@everestbiotech.com

Sales:

usasales@everestbiotech.com

Tech support:

support@everestbiotech.com

Tel: 888-320-4628 (toll-free)

Fax: 888-841-9041

www.everestbiotech.com

**Research Use Only. Not for
diagnostic or therapeutic use.**

EB12494 - Goat Anti-VPS16 (isoform 1) Antibody

Size: 100µg specific antibody in 200µl



Target Protein

Principal Names: VPS16, vacuolar protein sorting 16 homolog (S. cerevisiae), hVPS16, OTTHUMP00000030047, OTTHUMP00000030048, vacuolar protein sorting protein 16, vacuolar protein sorting-associated protein 16 homolog

Official Symbol: VPS16

Accession Number(s): NP_072097.2

Human GeneID(s): [64601](#)

Non-Human GeneID(s): 80743 (mouse), 296159 (rat)

Important Comments: This antibody is expected to recognize reported isoform 1 (NP_072097.2) only.

Immunogen

Peptide with sequence C-KESQKADEYLREIQ, from the internal region of the protein sequence according to NP_072097.2.

Please note the [peptide](#) is available for sale.

Purification and Storage

Purified from goat serum by ammonium sulphate precipitation followed by antigen affinity chromatography using the immunizing peptide.

Supplied at 0.5 mg/ml in Tris saline, 0.02% sodium azide, pH7.3 with 0.5% bovine serum albumin.

Aliquot and store at -20°C. Minimize freezing and thawing.

Applications Tested

Peptide ELISA: antibody detection limit dilution 1:128000.

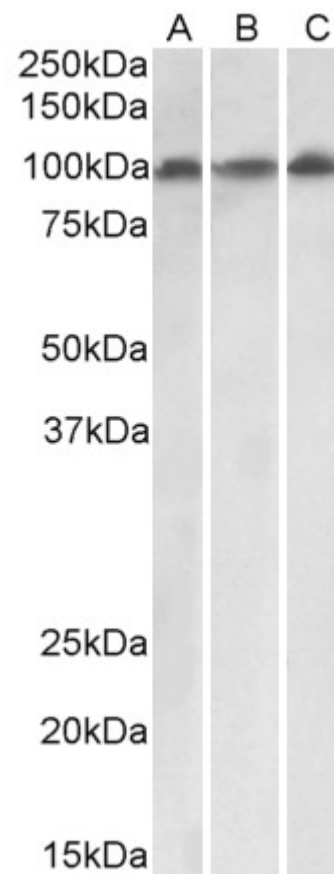
Western blot: Approx 100kDa band observed in lysates of cell lines HepG2, HeLa and Jurkat and in lysates of Mouse Spleen and Rat Thymus (calculated MW of 94.7kDa according to NP_072097.2). Recommended concentration: 0.1-0.3µg/ml. Primary incubation was 1 hour.

IHC: Paraffin embedded Human Uterus. Recommended concentration: 5µg/ml.

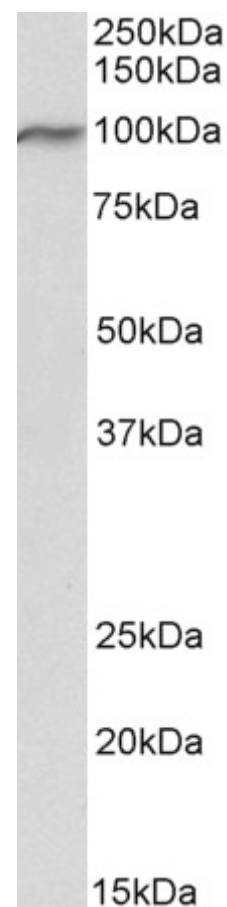
Species Reactivity

Tested: Human, Mouse, Rat

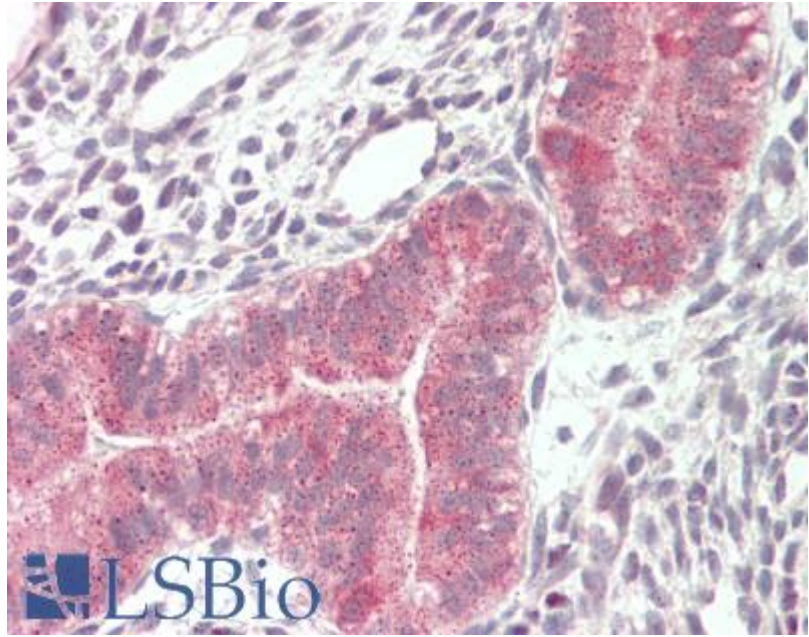
Expected from sequence similarity: Human, Mouse, Rat, Dog, Pig, Cow



EB12494 (0.1 μ g/ml) staining of HeLa (A), HepG2 (B) and Jurkat (C) lysates (35 μ g protein in RIPA buffer).
Detected by chemiluminescence.



EB12494 (0.1µg/ml) staining of Mouse Spleen lysate (35µg protein in RIPA buffer). Detected by chemiluminescence.



EB12494 (5µg/ml) staining of paraffin embedded Human Uterus. Steamed antigen retrieval with citrate buffer pH 6, AP-staining.