

## UK Office

### Everest Biotech Ltd

Cherwell Innovation Centre  
77 Heyford Park  
Upper Heyford  
Oxfordshire  
OX25 5HD  
UK

Enquiries:

[info@everestbiotech.com](mailto:info@everestbiotech.com)

Sales:

[sales@everestbiotech.com](mailto:sales@everestbiotech.com)

Tech support:

[support@everestbiotech.com](mailto:support@everestbiotech.com)

Tel: +44 (0)1869 238326

[www.everestbiotech.com](http://www.everestbiotech.com)

**Research Use Only. Not for  
diagnostic or therapeutic use.**

## EB06276 - Goat Anti-VPS28 Antibody

Size: 100µg specific antibody in 200µl



### Target Protein

**Principal Names:** VPS28, vacuolar protein sorting 28 (yeast), vacuolar protein sorting 28 homolog (*S. cerevisiae*), MGC60323, vacuolar protein sorting 28, yeast class E protein Vps28p homolog

**Official Symbol:** VPS28

**Accession Number(s):** NP\_057292.1

**Human GeneID(s):** [51160](#)

**Non-Human GeneID(s):** 66914 (mouse)

**Important Comments:** This antibody is expected to recognize isoform 1 (NP\_057292.1) only.

### Immunogen

Peptide with sequence C-ESAYNAFNRFLHA, from the C Terminus of the protein sequence according to NP\_057292.1.

Please note the [peptide](#) is available for sale.

### Purification and Storage

Purified from goat serum by ammonium sulphate precipitation followed by antigen affinity chromatography using the immunizing peptide.

Supplied at 0.5 mg/ml in Tris saline, 0.02% sodium azide, pH7.3 with 0.5% bovine serum albumin.

Aliquot and store at -20°C. Minimize freezing and thawing.

### Applications Tested

**Peptide ELISA:** antibody detection limit dilution 1:1000.

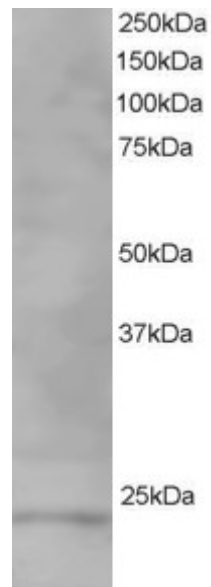
**Western blot:** Approx 24kDa band observed in H460, Human Testis and Brain lysates (predicted MW of 25kDa according to NP\_057292.1). Recommended for use at 1-3µg/ml.

**IHC:** In paraffin embedded Human Testis, stains acrosomal head caps in round spermatids. Recommended concentration: 10µg/ml.

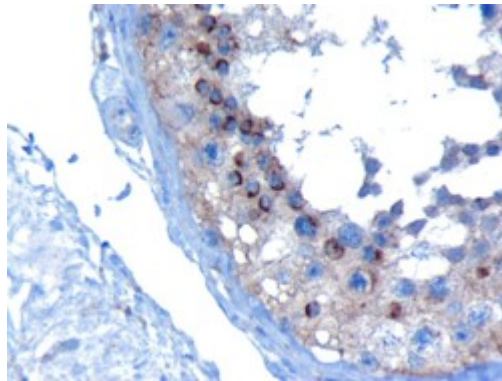
### Species Reactivity

**Tested:** Human

**Expected from sequence similarity:** Human, Mouse, Rat, Dog, Pig



EB06276 staining (1 $\mu$ g/ml) of Human Testis lysate (RIPA buffer, 35 $\mu$ g total protein per lane). Primary incubated for 1 hour. Detected by chemiluminescence.



EB06276 (10 $\mu$ g/ml) staining of paraffin embedded Human Testis. Microwaved antigen retrieval with Tris/EDTA buffer pH9, HRP-staining.