



UK Office

Everest Biotech Ltd

Cherwell Innovation Centre
77 Heyford Park
Upper Heyford
Oxfordshire
OX25 5HD
UK

Enquiries:

info@everestbiotech.com

Sales:

sales@everestbiotech.com

Tech support:

support@everestbiotech.com

Tel: +44 (0)1869 238326

Fax: +44 (0)1869 238327

US Office

Everest Biotech c/o Abcore

405 Maple Street, Suite A106
Ramona,
CA 92065
USA

Inquiries:

info@everestbiotech.com

Sales:

usasales@everestbiotech.com

Tech support:

support@everestbiotech.com

Tel: 888-320-4628 (toll-free)

Fax: 888-841-9041

www.everestbiotech.com

**Research Use Only. Not for
diagnostic or therapeutic use.**

EB06276 - Goat Anti-VPS28 Antibody

Size: 100µg specific antibody in 200µl



Target Protein

Principal Names: VPS28, vacuolar protein sorting 28 (yeast), vacuolar protein sorting 28 homolog (S. cerevisiae), MGC60323, vacuolar protein sorting 28, yeast class E protein Vps28p homolog

Official Symbol: VPS28

Accession Number(s): NP_057292.1

Human GeneID(s): [51160](#)

Non-Human GeneID(s): 66914 (mouse)

Important Comments: This antibody is expected to recognize isoform 1 (NP_057292.1) only.

Immunogen

Peptide with sequence C-ESAYNAFNRLHA, from the C Terminus of the protein sequence according to NP_057292.1.

Please note the [peptide](#) is available for sale.

Purification and Storage

Purified from goat serum by ammonium sulphate precipitation followed by antigen affinity chromatography using the immunizing peptide.

Supplied at 0.5 mg/ml in Tris saline, 0.02% sodium azide, pH7.3 with 0.5% bovine serum albumin.

Aliquot and store at -20°C. Minimize freezing and thawing.

Applications Tested

Peptide ELISA: antibody detection limit dilution 1:1000.

Western blot: Approx 24kDa band observed in H460, Human Testis and Brain lysates (predicted MW of 25kDa according to NP_057292.1). Recommended for use at 1-3µg/ml.

IHC: In paraffin embedded Human Testis, stains acrosomal head caps in round spermatids. Recommended concentration: 10µg/ml.

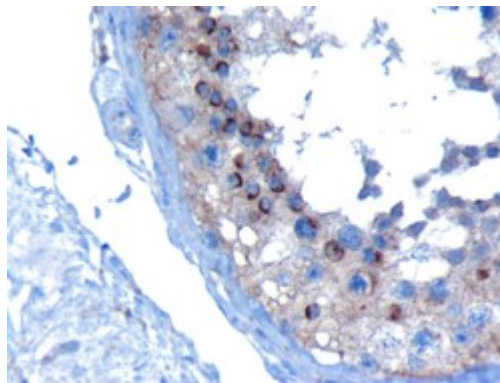
Species Reactivity

Tested: Human

Expected from sequence similarity: Human, Mouse, Rat, Dog, Pig



EB06276 staining (1 μ g/ml) of Human Testis lysate (RIPA buffer, 35 μ g total protein per lane). Primary incubated for 1 hour. Detected by chemiluminescence.



EB06276 (10 μ g/ml) staining of paraffin embedded Human Testis. Microwaved antigen retrieval with Tris/EDTA buffer pH9, HRP-staining.