

## UK Office

### Everest Biotech Ltd

Cherwell Innovation Centre  
77 Heyford Park  
Upper Heyford  
Oxfordshire  
OX25 5HD  
UK

Enquiries:

[info@everestbiotech.com](mailto:info@everestbiotech.com)

Sales:

[sales@everestbiotech.com](mailto:sales@everestbiotech.com)

Tech support:

[support@everestbiotech.com](mailto:support@everestbiotech.com)

Tel: +44 (0)1869 238326

[www.everestbiotech.com](http://www.everestbiotech.com)

**Research Use Only. Not for  
diagnostic or therapeutic use.**

## EB06145 - Goat Anti-VPS45 (C Terminus) Antibody

Size: 100µg specific antibody in 200µl

### Target Protein

**Principal Names:** VPS45, VPS45A, VPS45B, VSP45, VSP45A, H1, H1VPS45, leucocyte vacuolar protein sorting 45, vacuolar protein sorting 45A, vacuolar protein sorting 45A (yeast homolog), vacuolar protein sorting 45 homolog (*S. cerevisiae*), vacuolar protein sorting 45A (yeast), vacuolar protein sorting 45B (yeast), vacuolar protein sorting protein similar to *S. cerevisiae* Vsp45p, RP11-45817.2, VPS54A

**Official Symbol:** VPS45

**Accession Number(s):** NP\_009190.2

**Human GeneID(s):** [11311](#)

**Non-Human GeneID(s):** 22365 (mouse)

### Immunogen

Peptide with sequence C-ESSQVTSRSASRR, from the C Terminus of the protein sequence according to NP\_009190.2.

Please note the [peptide](#) is available for sale.

### Purification and Storage

Purified from goat serum by ammonium sulphate precipitation followed by antigen affinity chromatography using the immunizing peptide.

Supplied at 0.5 mg/ml in Tris saline, 0.02% sodium azide, pH7.3 with 0.5% bovine serum albumin.

Aliquot and store at -20°C. Minimize freezing and thawing.

### Applications Tested

**Peptide ELISA:** antibody detection limit dilution 1:32000.

**Western blot:** Approx 60kDa band observed in Human Testis and Peripheral Blood Mononucleocyte lysates (calculated MW of 65.1kDa according to NP\_009190.2).

Recommended concentration: 0.3-1µg/ml. Primary incubation was 1 hour.

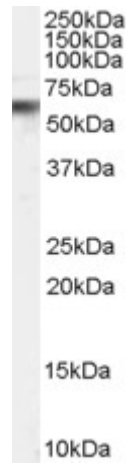
**IHC:** Paraffin embedded Human Brain (Cortex), Placenta and Small Intestine.

Recommended concentration: 5µg/ml.

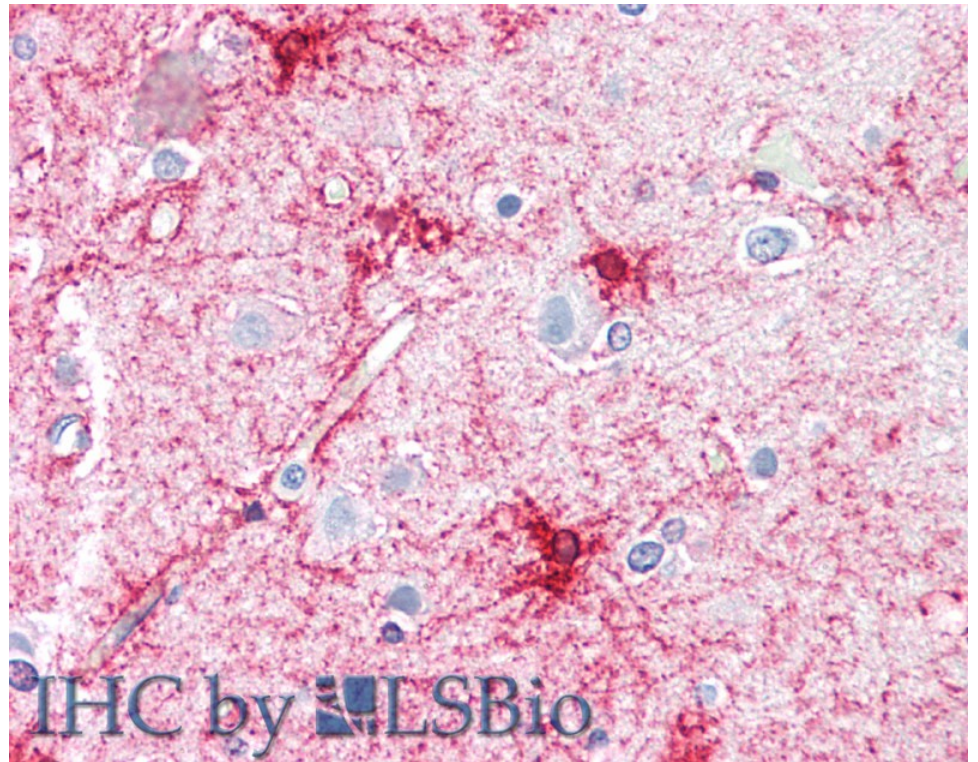
### Species Reactivity

**Tested:** Human

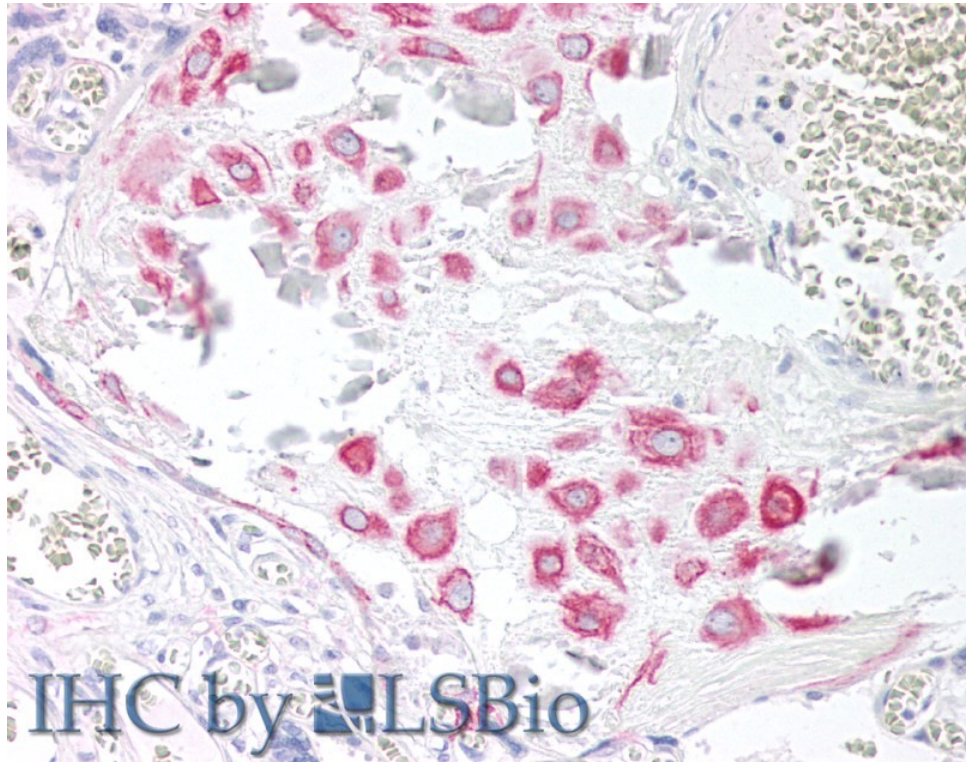
**Expected from sequence similarity:** Human, Mouse, Dog, Cow



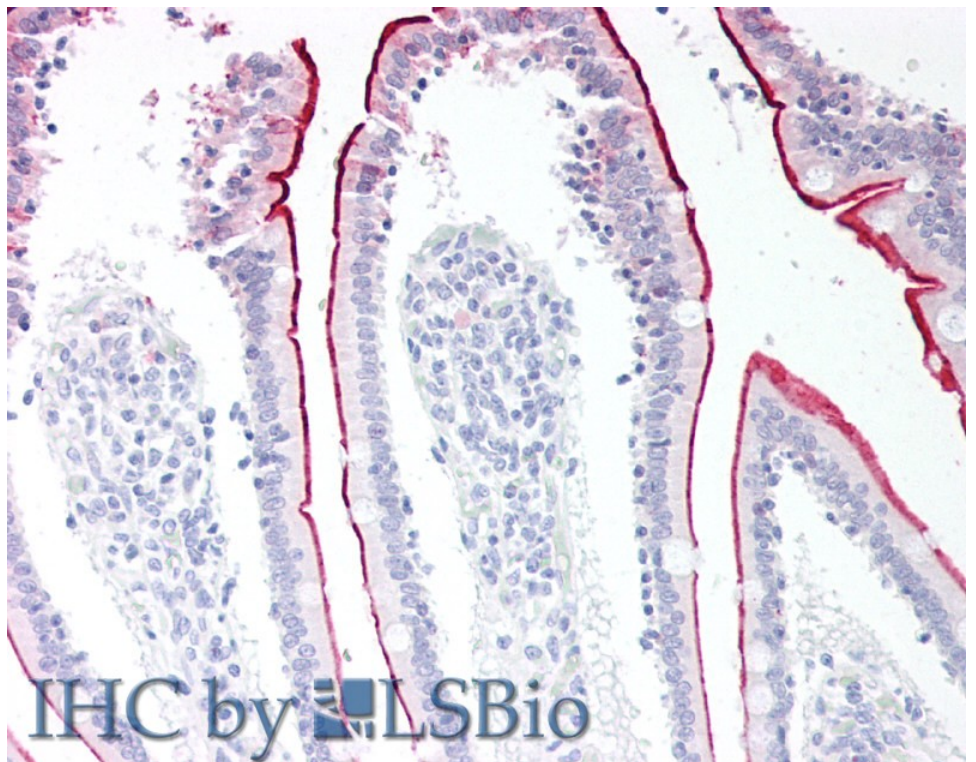
EB06145 (0.3 $\mu$ g/ml) staining of Human Peripheral Blood Mononucleocyte lysate (35 $\mu$ g protein in RIPA buffer).  
Detected by chemiluminescence.



EB06145 (5 $\mu$ g/ml) staining of paraffin embedded Human Cortex. Steamed antigen retrieval with citrate buffer pH 6, AP-staining.



EB06145 (5µg/ml) staining of paraffin embedded Human Placenta. Steamed antigen retrieval with citrate buffer pH 6, AP-staining.



EB06145 (5µg/ml) staining of paraffin embedded Human Small Intestine. Steamed antigen retrieval with citrate buffer pH 6, AP-staining.