



UK Office

Everest Biotech Ltd

Cherwell Innovation Centre
77 Heyford Park
Upper Heyford
Oxfordshire
OX25 5HD
UK

Enquiries:

info@everestbiotech.com

Sales:

sales@everestbiotech.com

Tech support:

support@everestbiotech.com

Tel: +44 (0)1869 238326

Fax: +44 (0)1869 238327

US Office

Everest Biotech c/o Abcore

405 Maple Street, Suite A106
Ramona,
CA 92065
USA

Inquiries:

info@everestbiotech.com

Sales:

usasales@everestbiotech.com

Tech support:

support@everestbiotech.com

Tel: 888-320-4628 (toll-free)

Fax: 888-841-9041

www.everestbiotech.com

**Research Use Only. Not for
diagnostic or therapeutic use.**

EB06145 - Goat Anti-VPS45 (C Terminus) Antibody

Size: 100µg specific antibody in 200µl

Target Protein

Principal Names: VPS45, VPS45A, VPS45B, VSP45, VSP45A, H1, H1VPS45, leucocyte vacuolar protein sorting 45, vacuolar protein sorting 45A, vacuolar protein sorting 45A (yeast homolog), vacuolar protein sorting 45 homolog (S. cerevisiae), vacuolar protein sorting 45A (yeast), vacuolar protein sorting 45B (yeast), vacuolar protein sorting protein similar to S. cerevisiae Vsp45p, RP11-458I7.2, VPS54A

Official Symbol: VPS45

Accession Number(s): NP_009190.2

Human GeneID(s): [11311](#)

Non-Human GeneID(s): 22365 (mouse)

Immunogen

Peptide with sequence C-ESSQVTSRASRR, from the C Terminus of the protein sequence according to NP_009190.2.

Please note the [peptide](#) is available for sale.

Purification and Storage

Purified from goat serum by ammonium sulphate precipitation followed by antigen affinity chromatography using the immunizing peptide.

Supplied at 0.5 mg/ml in Tris saline, 0.02% sodium azide, pH7.3 with 0.5% bovine serum albumin.

Aliquot and store at -20°C. Minimize freezing and thawing.

Applications Tested

Peptide ELISA: antibody detection limit dilution 1:32000.

Western blot: Approx 60kDa band observed in Human Testis and Peripheral Blood Mononucleocyte lysates (calculated MW of 65.1kDa according to NP_009190.2).

Recommended concentration: 0.3-1µg/ml. Primary incubation was 1 hour.

IHC: Paraffin embedded Human Brain (Cortex), Placenta and Small Intestine.

Recommended concentration: 5µg/ml.

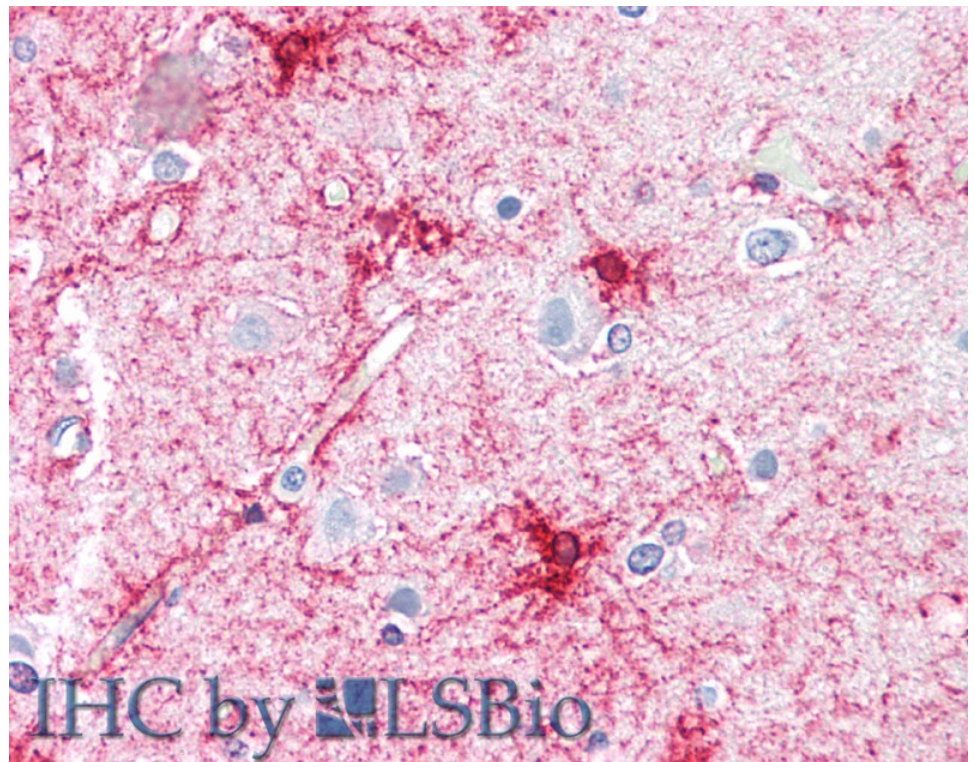
Species Reactivity

Tested: Human

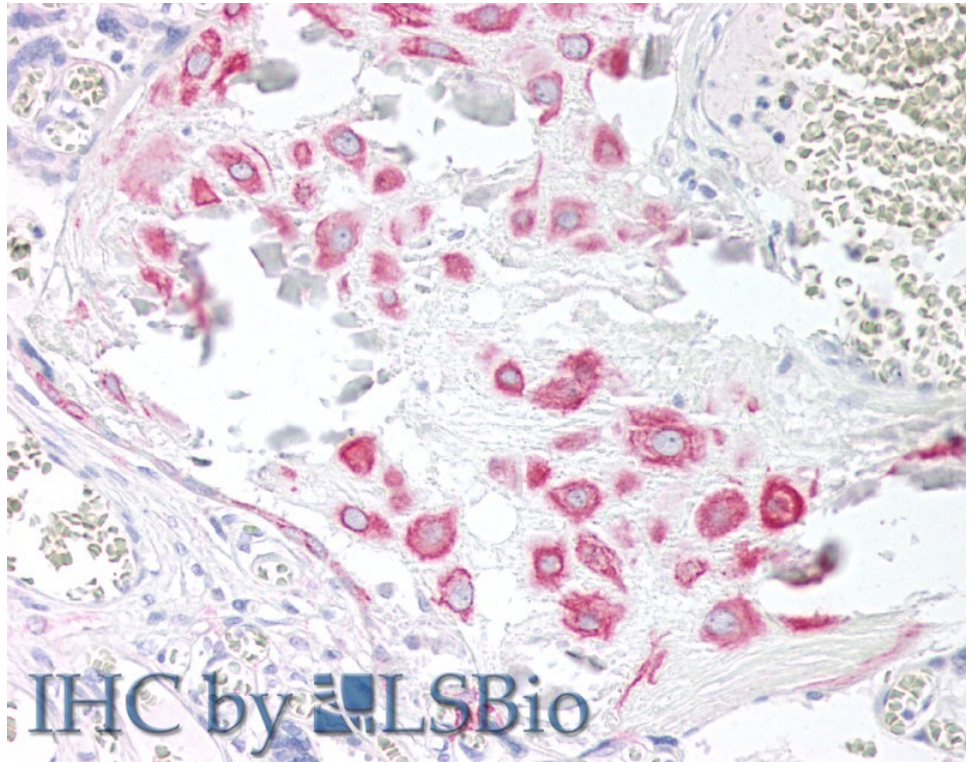
Expected from sequence similarity: Human, Mouse, Dog, Cow



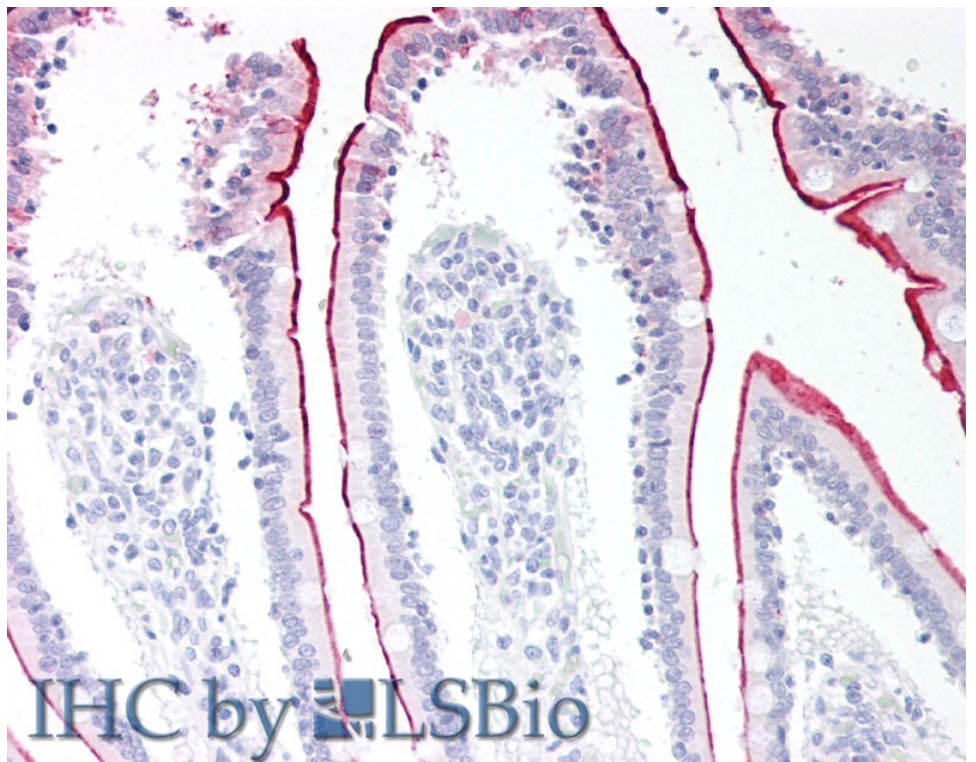
EB06145 (0.3 μ g/ml) staining of Human Peripheral Blood Mononucleocyte lysate (35 μ g protein in RIPA buffer).
Detected by chemiluminescence.



EB06145 (5 μ g/ml) staining of paraffin embedded Human Cortex. Steamed antigen retrieval with citrate buffer pH 6, AP-staining.



EB06145 (5µg/ml) staining of paraffin embedded Human Placenta. Steamed antigen retrieval with citrate buffer pH 6, AP-staining.



EB06145 (5µg/ml) staining of paraffin embedded Human Small Intestine. Steamed antigen retrieval with citrate buffer pH 6, AP-staining.