



UK Office

Everest Biotech Ltd

Cherwell Innovation Centre
77 Heyford Park
Upper Heyford
Oxfordshire
OX25 5HD
UK

Enquiries:

info@everestbiotech.com

Sales:

sales@everestbiotech.com

Tech support:

support@everestbiotech.com

Tel: +44 (0)1869 238326

Fax: +44 (0)1869 238327

US Office

Everest Biotech c/o Abcore

405 Maple Street, Suite A106
Ramona,
CA 92065
USA

Inquiries:

info@everestbiotech.com

Sales:

usasales@everestbiotech.com

Tech support:

support@everestbiotech.com

Tel: 888-320-4628 (toll-free)

Fax: 888-841-9041

www.everestbiotech.com

**Research Use Only. Not for
diagnostic or therapeutic use.**

EB06832 - Goat Anti-VPS45 (Internal) Antibody

Size: 100µg specific antibody in 200µl



Target Protein

Principal Names: VPS45A, HGNC:14579, H1, H1VPS45, VPS45, VPS45B, VPS54A, VSP45, VSP45A, leucocyte vacuolar protein sorting 45, vacuolar protein sorting 45A, vacuolar protein sorting 45A (yeast homolog), vacuolar protein sorting 45B (yeast), vacuolar protein sorting 45 homolog (S. cerevisiae), RP11-458I7.2

Official Symbol: VPS45

Accession Number(s): NP_009190.2

Human GeneID(s): [11311](#)

Immunogen

Peptide with sequence C-FQKKKPKEQQKLES, from the internal region of the protein sequence according to NP_009190.2.

Please note the [peptide](#) is available for sale.

Purification and Storage

Purified from goat serum by ammonium sulphate precipitation followed by antigen affinity chromatography using the immunizing peptide.

Supplied at 0.5 mg/ml in Tris saline, 0.02% sodium azide, pH7.3 with 0.5% bovine serum albumin.

Aliquot and store at -20°C. Minimize freezing and thawing.

Applications Tested

Peptide ELISA: antibody detection limit dilution 1:32000.

Western blot: Approx 55kDa band observed in Human Placenta lysates (calculated MW of 65.1kDa according to NP_009190.2). Recommended concentration: 0.03-0.1 µg/ml.

IHC: Paraffin embedded Human Spleen. Recommended concentration: 2.5µg/ml.

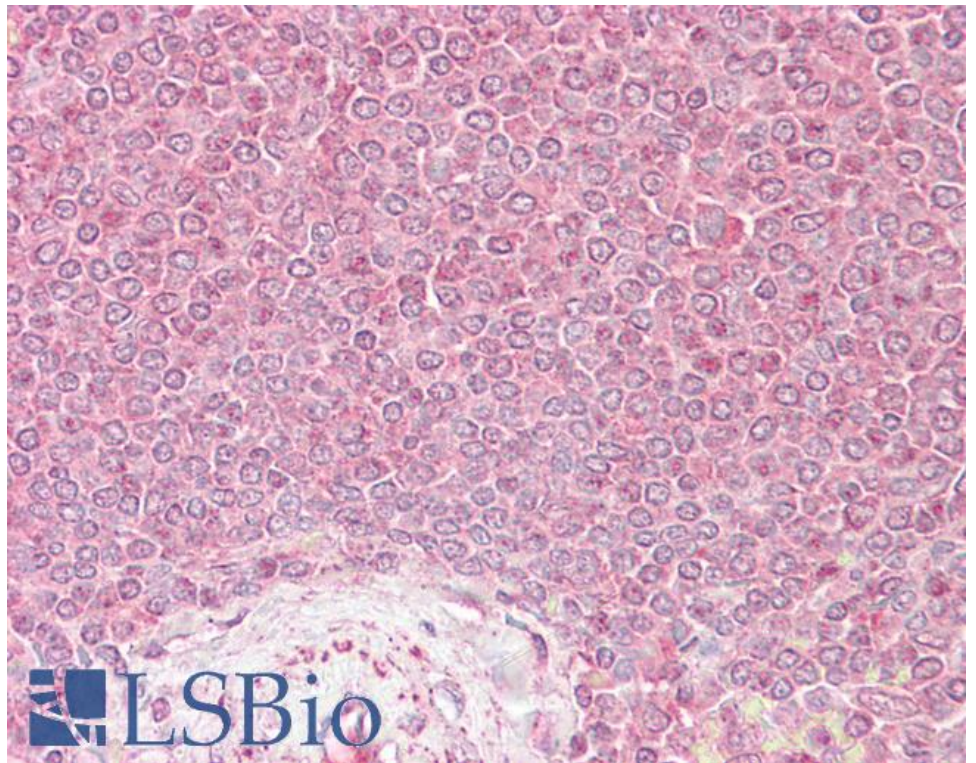
Species Reactivity

Tested: Human

Expected from sequence similarity: Human, Mouse, Rat, Dog, Pig, Cow



EB06832 (0.03 μ g/ml) staining of Human Placenta lysate (35 μ g protein in RIPA buffer). Primary incubation was 1 hour. Detected by chemiluminescence.



EB06832 (2.5 μ g/ml) staining of paraffin embedded Human Spleen. Steamed antigen retrieval with citrate buffer pH 6, AP-staining.