

## UK Office

### Everest Biotech Ltd

Cherwell Innovation Centre  
77 Heyford Park  
Upper Heyford  
Oxfordshire  
OX25 5HD  
UK

Enquiries:

[info@everestbiotech.com](mailto:info@everestbiotech.com)

Sales:

[sales@everestbiotech.com](mailto:sales@everestbiotech.com)

Tech support:

[support@everestbiotech.com](mailto:support@everestbiotech.com)

Tel: +44 (0)1869 238326

[www.everestbiotech.com](http://www.everestbiotech.com)

**Research Use Only. Not for  
diagnostic or therapeutic use.**

## EB11022 - Goat Anti-Wfdc1 (mouse) Antibody

Size: 100µg specific antibody in 200µl



### Target Protein

**Principal Names:** WFDC1, WAP four-disulfide core domain 1, ps20, WAP four-disulfide core domain 1 homolog, WAP four-disulfide core domain protein 1, prostate stromal protein ps20, ps20 growth inhibitor, 2310058A03Rik, 2310058A03Rik, prostate stromal protein ps20, ps20, ps20 growth inhibitor, WAP four-disulfide core domain 1, WAP four-disulfide core domain 1 homolog, WAP four-disulfide core domain protein 1, WFDC1

**Official Symbol:** Wfdc1

**Accession Number(s):** NP\_075884.1

**Non-Human GeneID(s):** 67866 (mouse), 171112 (rat)

### Immunogen

Peptide with sequence C-RQRLHKEYPEGDSKN, from the internal region (near N Terminus) of the protein sequence according to NP\_075884.1.

Please note the [peptide](#) is available for sale.

### Purification and Storage

Purified from goat serum by ammonium sulphate precipitation followed by antigen affinity chromatography using the immunizing peptide.

Supplied at 0.5 mg/ml in Tris saline, 0.02% sodium azide, pH7.3 with 0.5% bovine serum albumin.

Aliquot and store at -20°C. Minimize freezing and thawing.

### Applications Tested

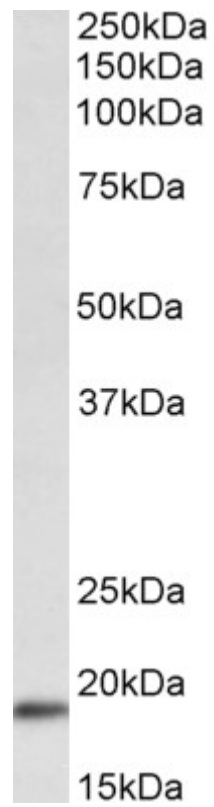
**Peptide ELISA:** antibody detection limit dilution 1:16000.

**Western blot:** Approx 19kDa band observed in Mouse Heart lysates (calculated MW of 23.1kDa according to NP\_075884.1). Recommended concentration: 0.3-1µg/ml.

### Species Reactivity

**Tested:** Mouse

**Expected from sequence similarity:** Mouse, Rat



EB11022 (0.3 $\mu$ g/ml) staining of Mouse Heart lysate (35 $\mu$ g protein in RIPA buffer). Primary incubation was 1 hour.  
Detected by chemiluminescence.