



UK Office

Everest Biotech Ltd

Cherwell Innovation Centre
77 Heyford Park
Upper Heyford
Oxfordshire
OX25 5HD
UK

Enquiries:

info@everestbiotech.com

Sales:

sales@everestbiotech.com

Tech support:

support@everestbiotech.com

Tel: +44 (0)1869 238326

Fax: +44 (0)1869 238327

US Office

Everest Biotech c/o Abcore

405 Maple Street, Suite A106
Ramona,
CA 92065
USA

Inquiries:

info@everestbiotech.com

Sales:

usasales@everestbiotech.com

Tech support:

support@everestbiotech.com

Tel: 888-320-4628 (toll-free)

Fax: 888-841-9041

www.everestbiotech.com

**Research Use Only. Not for
diagnostic or therapeutic use.**

EB09963 - Goat Anti-WFDC2 (aa29-43) Antibody

Size: 100µg specific antibody in 200µl



Target Protein

Principal Names: dJ461P17.6, EDDM4, epididymal protein 4, epididymal secretory protein E4, epididymis-specific, whey-acidic protein type, four-disulfide core, HE4, major epididym, MGC57529, WAP domain containing protein HE4-V4, WAP four-disulfide core domain 2, WAP5, WFDC2

Official Symbol: WFDC2

Accession Number(s): NP_006094.3

Human GeneID(s): [10406](#)

Immunogen

Peptide with sequence GAEKTGVCPELQADQ, from the internal region of the protein sequence according to NP_006094.3.

Please note the [peptide](#) is available for sale.

Purification and Storage

Purified from goat serum by ammonium sulphate precipitation followed by antigen affinity chromatography using the immunizing peptide.

Supplied at 0.5 mg/ml in Tris saline, 0.02% sodium azide, pH7.3 with 0.5% bovine serum albumin.

Aliquot and store at -20°C. Minimize freezing and thawing.

Applications Tested

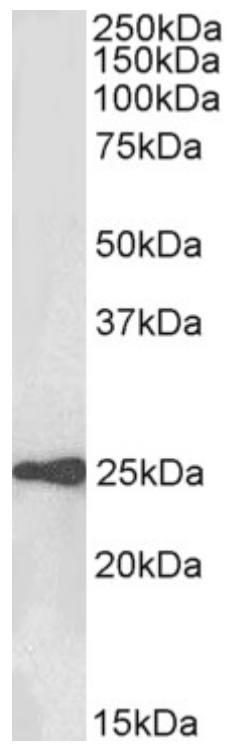
Peptide ELISA: antibody detection limit dilution 1:1000.

Western blot: Approx 25kDa band observed in Human Testis lysates (calculated MW of 13kDa according to NP_006094.3). The observed molecular weight corresponds to earlier findings with different antibodies from other commercial sources. Recommended concentration: 0.01-0.1µg/ml. Primary incubation was 1 hour.

Species Reactivity

Tested: Human

Expected from sequence similarity: Human, Dog



EB09963 (0.01µg/ml) staining of Human Testes lysate (35µg protein in RIPA buffer). Detected by chemiluminescence.