



## International Office

### Everest Biotech Ltd

Vector Laboratories, Inc.  
6737 Mowry Ave  
Newark, CA 94560  
United States

Customer Service:

[customerservice@vectorlabs.com](mailto:customerservice@vectorlabs.com)

Technical Service:

[technical@vectorlabs.com](mailto:technical@vectorlabs.com)

Tel: +1 (800) 227-6666

[www.everestbiotech.com](http://www.everestbiotech.com)

**Research Use Only. Not for  
diagnostic or therapeutic use.**

## EB09114 - Goat Anti-WIZ Antibody

Size: 100µg specific antibody in 200µl



### Target Protein

**Principal Names:** WIZ, widely interspaced zinc finger motifs, ZNF803, WIZ zinc finger, widely-interspaced zinc finger motifs

**Official Symbol:** WIZ

**Accession Number(s):** NP\_067064.2; NP\_001317324.1

**Human GeneID(s):** [58525](#)

**Non-Human GeneID(s):** 22404 (mouse), 314598 (rat)

### Immunogen

Peptide with sequence C-RSYIQGGRPFTKKFR, from the internal region of the protein sequence according to NP\_067064.2; NP\_001317324.1.

Please note the [peptide](#) is available for sale.

### Purification and Storage

Purified from goat serum by ammonium sulphate precipitation followed by antigen affinity chromatography using the immunizing peptide.

Supplied at 0.5 mg/ml in Tris saline, 0.02% sodium azide, pH7.3 with 0.5% bovine serum albumin.

Aliquot and store at -20°C. Minimize freezing and thawing.

### Applications Tested

**Peptide ELISA:** antibody detection limit dilution 1:2000.

**Western blot:** Approx 75kDa band observed in Human Brain (Cerebellum) lysates (calculated MW of 85.4kDa according to NP\_067064.2). An additional band of unknown identity was also consistently observed at 38kDa. This band was successfully blocked by incubation with the immunizing peptide. Recommended concentration: 0.3-1µg/ml. Primary incubation 1 hour at room temperature.

**Flow Cytometry:** Flow cytometric analysis of HeLa cells. Recommended concentration: 10ug/ml.

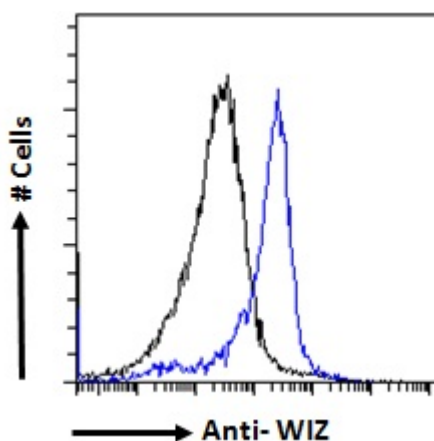
### Species Reactivity

**Tested:** Human

**Expected from sequence similarity:** Human, Mouse, Rat



EB09114 (1 $\mu$ g/ml) staining of Human Cerebellum lysate (A) + Blocking peptide (B) (35 $\mu$ g protein in RIPA buffer).  
Detected by chemiluminescence.



EB09114 Flow cytometric analysis of paraformaldehyde fixed HeLa cells (blue line), permeabilized with 0.5% Triton. Primary incubation 1hr (10 $\mu$ g/ml) followed by Alexa Fluor 488 secondary antibody (1 $\mu$ g/ml). IgG control: Unimmunized goat IgG (black line) followed by Alexa Fluor 488 secondary antibody.