



International Office

Everest Biotech Ltd

Vector Laboratories, Inc.
6737 Mowry Ave
Newark, CA 94560
United States

Customer Service:

customerservice@vectorlabs.com

Technical Service:

technical@vectorlabs.com

Tel: +1 (800) 227-6666

www.everestbiotech.com

**Research Use Only. Not for
diagnostic or therapeutic use.**

EB09452 - Goat Anti-WNT15 / WNT9B Antibody

Size: 100µg specific antibody in 200µl



Target Protein

Principal Names: WNT9B, wingless-type MMTV integration site family, member 9B, WNT14B, WNT15, wingless-type MMTV integration site family, member 15

Official Symbol: WNT9B

Accession Number(s): NP_003387.1

Human GeneID(s): [7484](#)

Non-Human GeneID(s): 22412 (mouse), 303586 (rat)

Immunogen

Peptide with sequence C-KRGNKDLRARADA, from the internal region of the protein sequence according to NP_003387.1.

Please note the [peptide](#) is available for sale.

Purification and Storage

Purified from goat serum by ammonium sulphate precipitation followed by antigen affinity chromatography using the immunizing peptide.

Supplied at 0.5 mg/ml in Tris saline, 0.02% sodium azide, pH7.3 with 0.5% bovine serum albumin.

Aliquot and store at -20°C. Minimize freezing and thawing.

Applications Tested

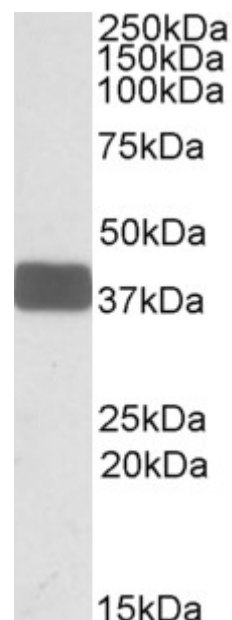
Peptide ELISA: antibody detection limit dilution 1:8000.

Western blot: Approx 38kDa band observed in Human Brain Cerebellum lysates and in Mouse Kidney and Brain lysates (calculated MW of 39kDa according to NP_003387.1).
Recommended concentration: 0.3-1µg/ml.

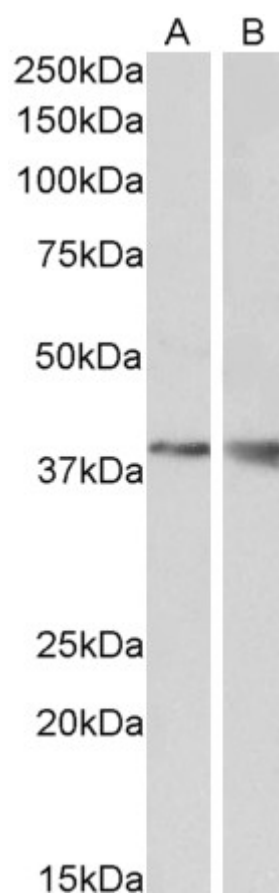
Species Reactivity

Tested: Human, Mouse

Expected from sequence similarity: Human, Mouse, Rat



EB09452 (0.3 μ g/ml) staining of Human Brain Cerebellum lysate (35 μ g protein in RIPA buffer). Primary incubation was 1 hour. Detected by chemiluminescence.



EB09452 (1 μ g/ml) staining of Mouse Kidney (A) and Brain (B) lysate (35 μ g protein in RIPA buffer). Primary incubation was 1 hour. Detected by chemiluminescence.