



UK Office

Everest Biotech Ltd

Cherwell Innovation Centre
77 Heyford Park
Upper Heyford
Oxfordshire
OX25 5HD
UK

Enquiries:

info@everestbiotech.com

Sales:

sales@everestbiotech.com

Tech support:

support@everestbiotech.com

Tel: +44 (0)1869 238326

www.everestbiotech.com

**Research Use Only. Not for
diagnostic or therapeutic use.**

EB08557-T - Goat Anti-XBP1 / TREB5 Antibody - Trial

Size: 20µg specific antibody in 40µl



Target Protein

Principal Names: XBP1, TREB5, X-box binding protein 1, XBP2, OTTHUMP00000028682, X-box-binding protein-1

Official Symbol: XBP1

Accession Number(s): NP_001073007.1

Human GeneID(s): [7494](#)

Non-Human GeneID(s): 22433 (mouse)

Important Comments: This antibody is expected to recognise isoform XBP1(S) (NP_001073007.1) only, The epitope for EB08557 is aa358-372.

Immunogen

Peptide with sequence C-NHSWEDTFANELFPQ, from the internal region of the protein sequence according to NP_001073007.1.

Please note the [peptide](#) is available for sale.

Purification and Storage

Purified from goat serum by ammonium sulphate precipitation followed by antigen affinity chromatography using the immunizing peptide.

Supplied at 0.5 mg/ml in Tris saline, 0.02% sodium azide, pH7.3 with 0.5% bovine serum albumin.

Aliquot and store at -20°C. Minimize freezing and thawing.

Applications Tested

Peptide ELISA: antibody detection limit dilution 1:4000.

Western blot: Approx 38kDa band observed in Nuclear lysates of cell line HeLa (calculated MW of 40.1kDa according to NP_001073007.1). Recommended concentration: 1-3µg/ml. Primary incubation 1 hour at room temperature.

IHC: Paraffin embedded Human Breast. Recommended concentration: 5µg/ml.

Immunofluorescence: Expression of the protein seen in the endoplasmic reticulum, cytoplasm and nucleus of HeLa and MCF7 cells. Recommended concentration: 10µg/ml.

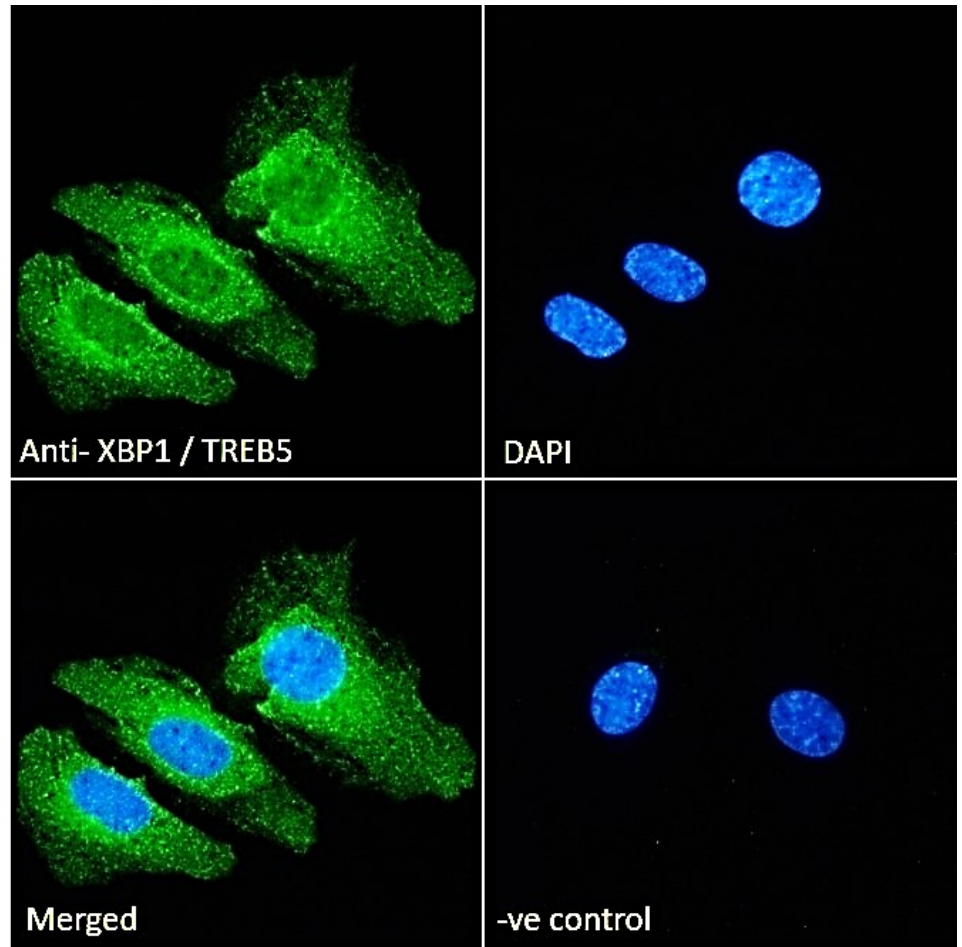
Species Reactivity

Tested: Human

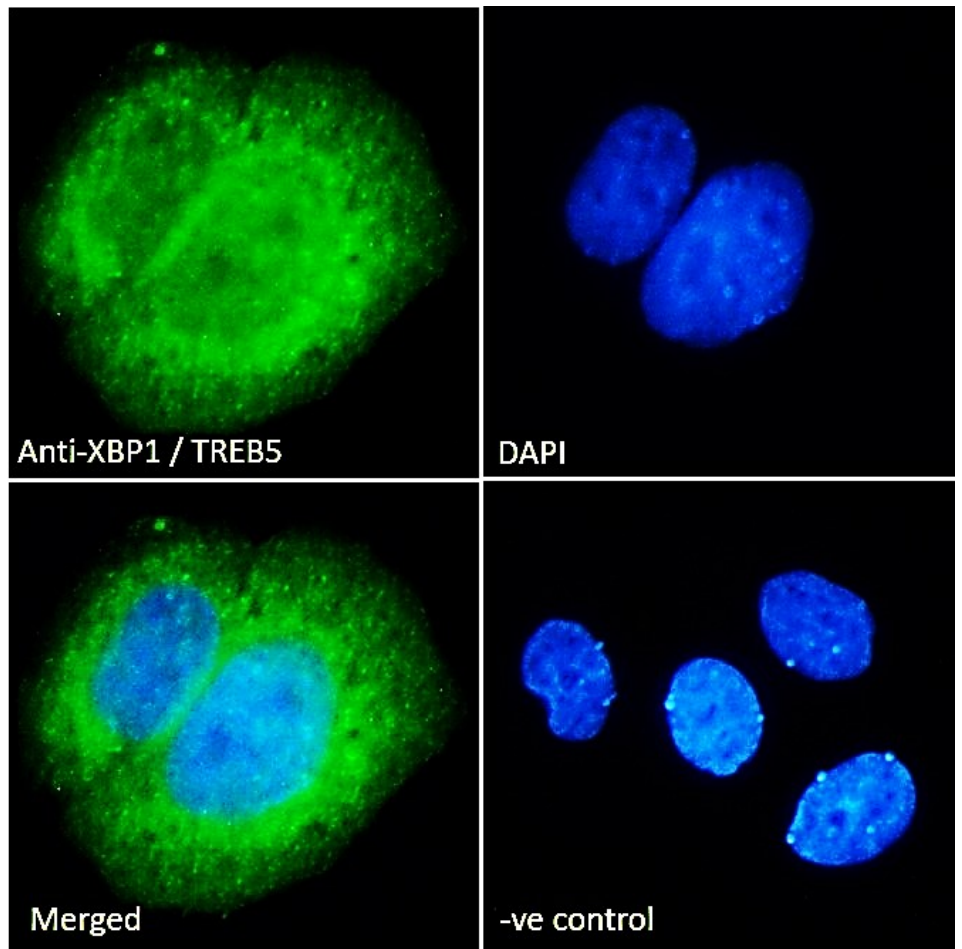
Expected from sequence similarity: Human, Mouse, Rat, Dog



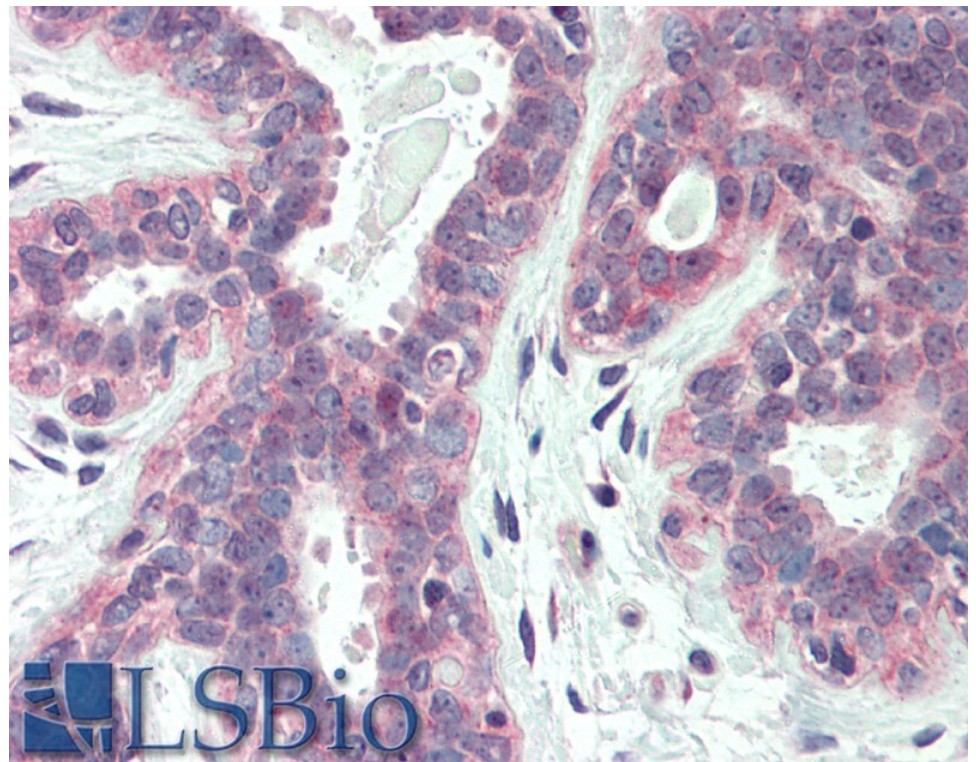
EB08557 (1µg/ml) staining of nuclear HeLa lysate (35µg protein in RIPA buffer). Detected by chemiluminescence.



EB08557 Immunofluorescence analysis of paraformaldehyde fixed HeLa cells, permeabilized with 0.15% Triton. Primary incubation 1hr (10ug/ml) followed by Alexa Fluor 488 secondary antibody (2ug/ml), showing ER, cytoplasmic and nuclear staining. The nuclear stain is DAPI (blue). Negative control: Unimmunized goat IgG (10ug/ml) followed by Alexa Fluor 488 secondary antibody (2ug/ml).



EB08557 Immunofluorescence analysis of paraformaldehyde fixed MCF7 cells, permeabilized with 0.15% Triton. Primary incubation 1hr (10ug/ml) followed by Alexa Fluor 488 secondary antibody (2ug/ml), showing ER, cytoplasmic and nuclear staining. The nuclear stain is DAPI (blue). Negative control: Unimmunized goat IgG (10ug/ml) followed by Alexa Fluor 488 secondary antibody (2ug/ml).



EB08557 (5µg/ml) staining of paraffin embedded Human Breast. Steamed antigen retrieval with citrate buffer pH 6, AP-staining.