



## UK Office

### Everest Biotech Ltd

Cherwell Innovation Centre  
77 Heyford Park  
Upper Heyford  
Oxfordshire  
OX25 5HD  
UK

Enquiries:

[info@everestbiotech.com](mailto:info@everestbiotech.com)

Sales:

[sales@everestbiotech.com](mailto:sales@everestbiotech.com)

Tech support:

[support@everestbiotech.com](mailto:support@everestbiotech.com)

Tel: +44 (0)1869 238326

[www.everestbiotech.com](http://www.everestbiotech.com)

**Research Use Only. Not for  
diagnostic or therapeutic use.**

## EB08557 - Goat Anti-XBP1 / TREB5 Antibody

Size: 100µg specific antibody in 200µl



### Target Protein

**Principal Names:** XBP1, TREB5, X-box binding protein 1, XBP2, OTTHUMP00000028682, X-box-binding protein-1

**Official Symbol:** XBP1

**Accession Number(s):** NP\_001073007.1

**Human GeneID(s):** [7494](#)

**Non-Human GeneID(s):** 22433 (mouse)

**Important Comments:** This antibody is expected to recognise isoform XBP1(S) (NP\_001073007.1) only, The epitope for EB08557 is aa358-372.

### Immunogen

Peptide with sequence C-NHSWEDTFANELFPQ, from the internal region of the protein sequence according to NP\_001073007.1.

Please note the [peptide](#) is available for sale.

### Purification and Storage

Purified from goat serum by ammonium sulphate precipitation followed by antigen affinity chromatography using the immunizing peptide.

Supplied at 0.5 mg/ml in Tris saline, 0.02% sodium azide, pH7.3 with 0.5% bovine serum albumin.

Aliquot and store at -20°C. Minimize freezing and thawing.

### Applications Tested

**Peptide ELISA:** antibody detection limit dilution 1:4000.

**Western blot:** Approx 38kDa band observed in Nuclear lysates of cell line HeLa (calculated MW of 40.1kDa according to NP\_001073007.1). Recommended concentration: 1-3µg/ml. Primary incubation 1 hour at room temperature.

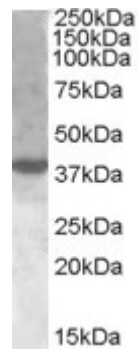
**IHC:** Paraffin embedded Human Breast. Recommended concentration: 5µg/ml.

**Immunofluorescence:** Expression of the protein seen in the endoplasmic reticulum, cytoplasm and nucleus of HeLa and MCF7 cells. Recommended concentration: 10µg/ml.

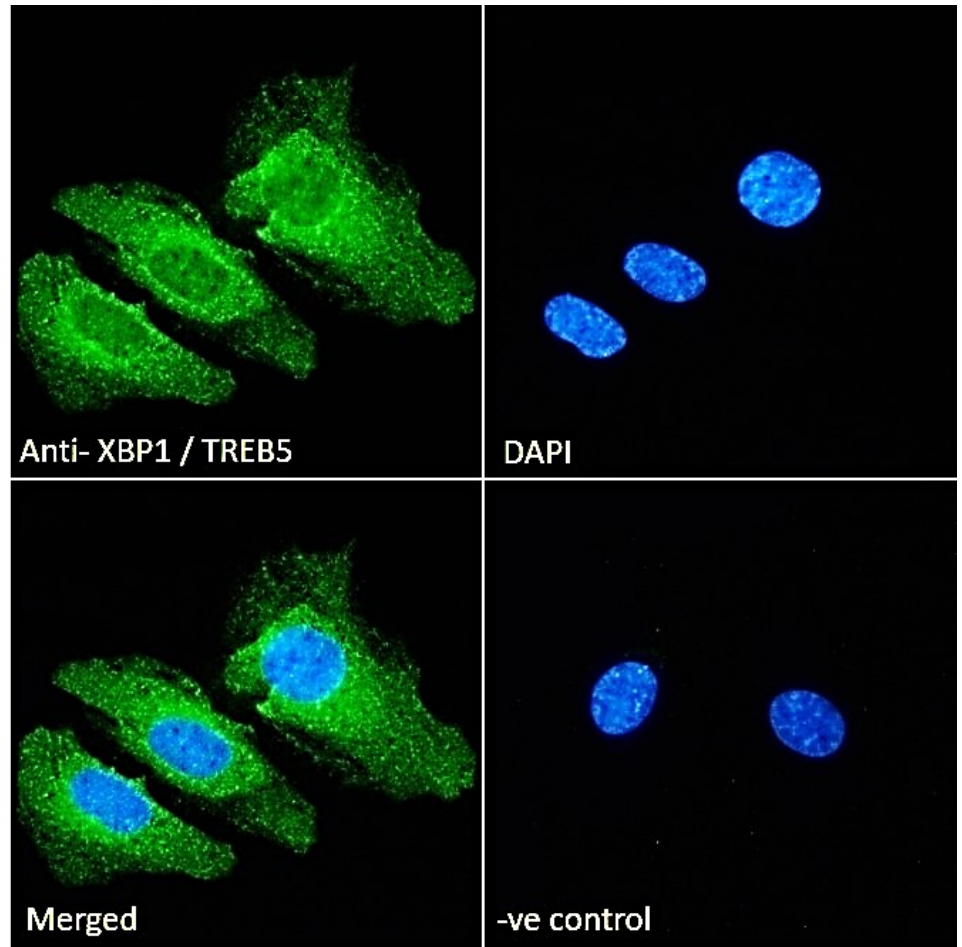
### Species Reactivity

**Tested:** Human

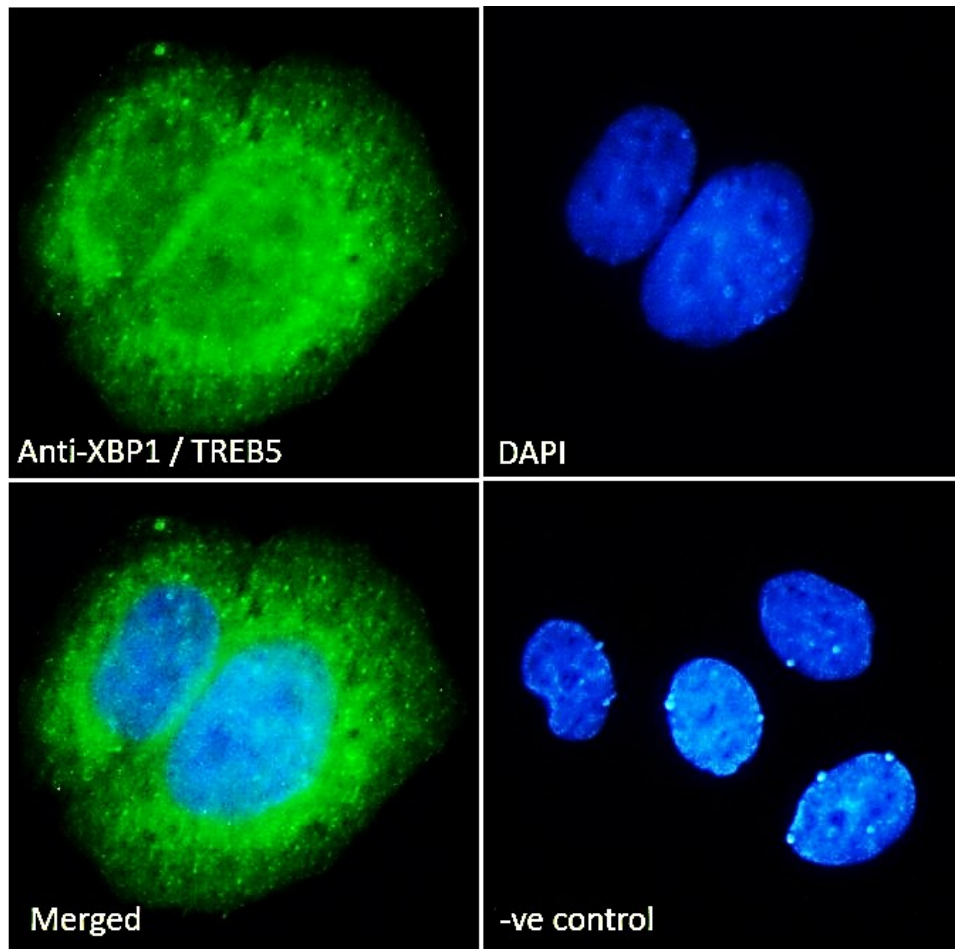
**Expected from sequence similarity:** Human, Mouse, Rat, Dog



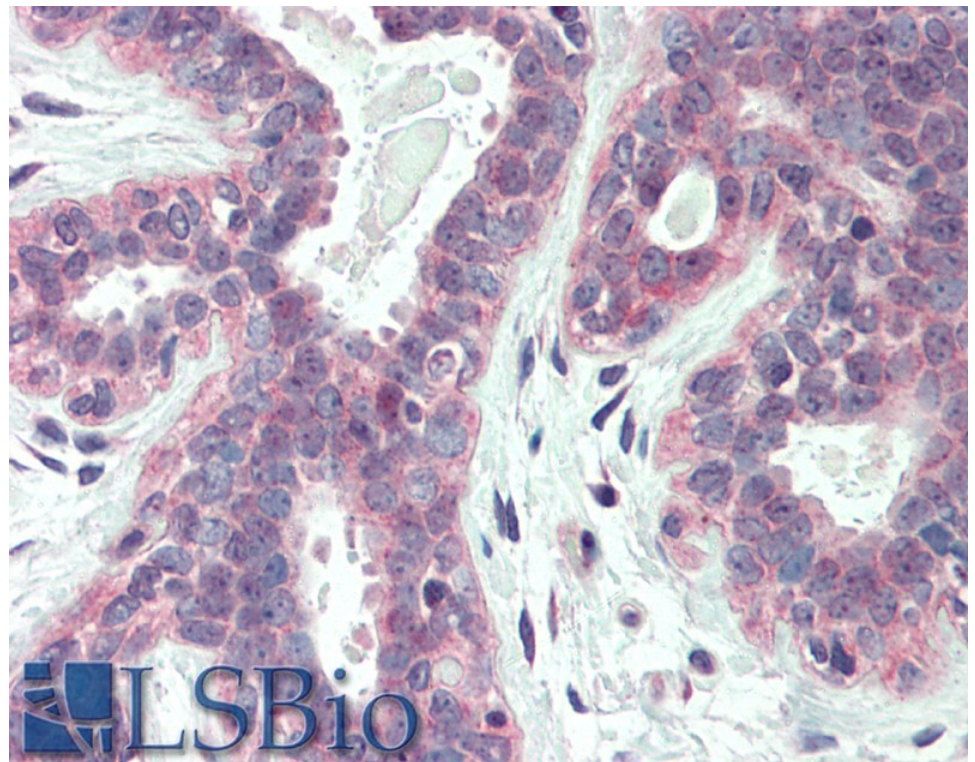
EB08557 (1 $\mu$ g/ml) staining of nuclear HeLa lysate (35 $\mu$ g protein in RIPA buffer). Detected by chemiluminescence.



EB08557 Immunofluorescence analysis of paraformaldehyde fixed HeLa cells, permeabilized with 0.15% Triton. Primary incubation 1hr (10 $\mu$ g/ml) followed by Alexa Fluor 488 secondary antibody (2 $\mu$ g/ml), showing ER, cytoplasmic and nuclear staining. The nuclear stain is DAPI (blue). Negative control: Unimmunized goat IgG (10 $\mu$ g/ml) followed by Alexa Fluor 488 secondary antibody (2 $\mu$ g/ml).



EB08557 Immunofluorescence analysis of paraformaldehyde fixed MCF7 cells, permeabilized with 0.15% Triton. Primary incubation 1hr (10ug/ml) followed by Alexa Fluor 488 secondary antibody (2ug/ml), showing ER, cytoplasmic and nuclear staining. The nuclear stain is DAPI (blue). Negative control: Unimmunized goat IgG (10ug/ml) followed by Alexa Fluor 488 secondary antibody (2ug/ml).



EB08557 (5µg/ml) staining of paraffin embedded Human Breast. Steamed antigen retrieval with citrate buffer pH 6, AP-staining.