



International Office

Everest Biotech Ltd

Vector Laboratories, Inc.
6737 Mowry Ave
Newark, CA 94560
United States

Customer Service:

customerservice@vectorlabs.com

Technical Service:

technical@vectorlabs.com

Tel: +1 (800) 227-6666

www.everestbiotech.com

**Research Use Only. Not for
diagnostic or therapeutic use.**

EB06551 - Goat Anti-Ymer / CCDC50 Antibody

Size: 100µg specific antibody in 200µl



Target Protein

Principal Names: Ymer protein, coiled-coil domain containing 50, C3orf6, YMER, C3orf6, chromosome 3 open reading frame 6

Official Symbol: CCDC50

Accession Number(s): NP_848018.1; NP_777568.1

Human GeneID(s): [152137](#)

Important Comments: This antibody is expected to recognise both reported isoforms of human Ymer protein.

Immunogen

Peptide with sequence CFSKSESSHKGFFHYK, from the internal region of the protein sequence according to NP_848018.1; NP_777568.1.

Please note the [peptide](#) is available for sale.

Purification and Storage

Purified from goat serum by ammonium sulphate precipitation followed by antigen affinity chromatography using the immunizing peptide.

Supplied at 0.5 mg/ml in Tris saline, 0.02% sodium azide, pH7.3 with 0.5% bovine serum albumin.

Aliquot and store at -20°C. Minimize freezing and thawing.

Applications Tested

Peptide ELISA: antibody detection limit dilution 1:32000.

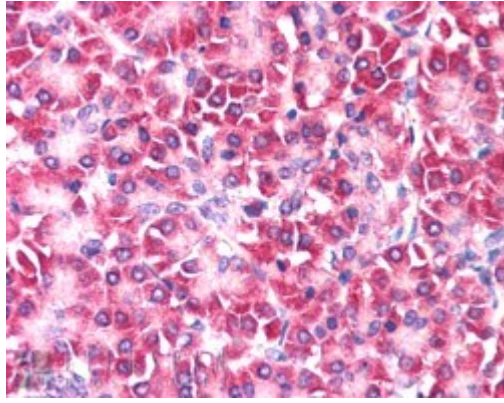
Western blot: Preliminary experiments gave an approx 18kDa band in Human Brain lysates after 1µg/ml antibody staining. Please note that currently we cannot find an explanation in the literature for the band we observe given the calculated size of 56.3kDa according to NP_848018.1 and 35.8kDa according to NP_777568.1. The 18kDa band was successfully blocked by incubation with the immunizing peptide. We would appreciate any feedback from people in the field - have any results been reported with other antibodies/lysates? Have any further splice variants/modified forms been reported?

IHC: In paraffin embedded Human Pancreas shows strong staining in cytoplasm in select acinar cells. Recommended concentration, 5-10µg/ml.

Species Reactivity

Tested: Human

Expected from sequence similarity: Human, Rat, Dog, Cow



EB06551 (5µg/ml) staining of paraffin embedded Human Pancreas. Steamed antigen retrieval with citrate buffer pH 6, AP-staining.