

UK Office

Everest Biotech Ltd

Cherwell Innovation Centre
77 Heyford Park
Upper Heyford
Oxfordshire
OX25 5HD
UK

Enquiries:

info@everestbiotech.com

Sales:

sales@everestbiotech.com

Tech support:

support@everestbiotech.com

Tel: +44 (0)1869 238326

www.everestbiotech.com

**Research Use Only. Not for
diagnostic or therapeutic use.**

EB05042 - Goat Anti-ZCCHC11 / PAPD3 Antibody

Size: 100µg specific antibody in 200µl



Target Protein

Principal Names: ZCCHC11, KIAA0191, zinc finger, CCHC domain containing 11, PAPD3, PAP associated domain containing 3

Official Symbol: TUT4

Accession Number(s): NP_001009881.1; NP_056084.1; NP_001009882.1

Human GeneID(s): [23318](#)

Important Comments: This antibody is expected to recognize all 3 reported isoforms (as represented by NP_001009881.1; NP_056084.1; NP_001009882.1)

Immunogen

Peptide with sequence RERCPHPPRGNVSE, from the C Terminus of the protein sequence according to NP_001009881.1; NP_056084.1; NP_001009882.1.

Please note the [peptide](#) is available for sale.

Purification and Storage

Purified from goat serum by ammonium sulphate precipitation followed by antigen affinity chromatography using the immunizing peptide.

Supplied at 0.5 mg/ml in Tris saline, 0.02% sodium azide, pH7.3 with 0.5% bovine serum albumin.

Aliquot and store at -20°C. Minimize freezing and thawing.

Applications Tested

Peptide ELISA: antibody detection limit dilution 1:16000.

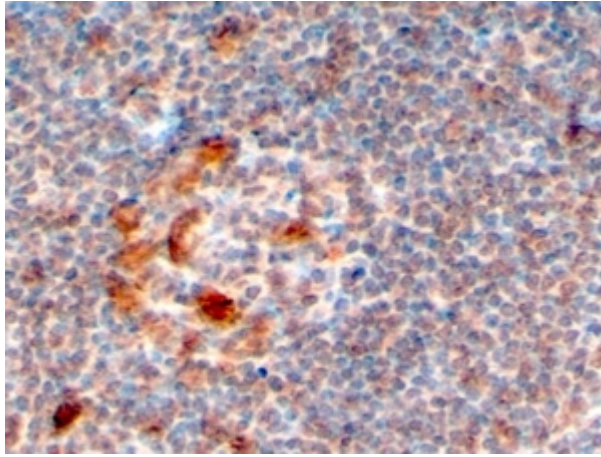
IHC: In paraffin embedded Human Lymph Node shows nuclear staining of select lymphocytes and staining of macrophages. Recommended concentration: 2-6µg/ml.

Immunofluorescence: Strong expression of the protein seen in the cytoplasm of A431 cells. Recommended concentration: 10µg/ml.

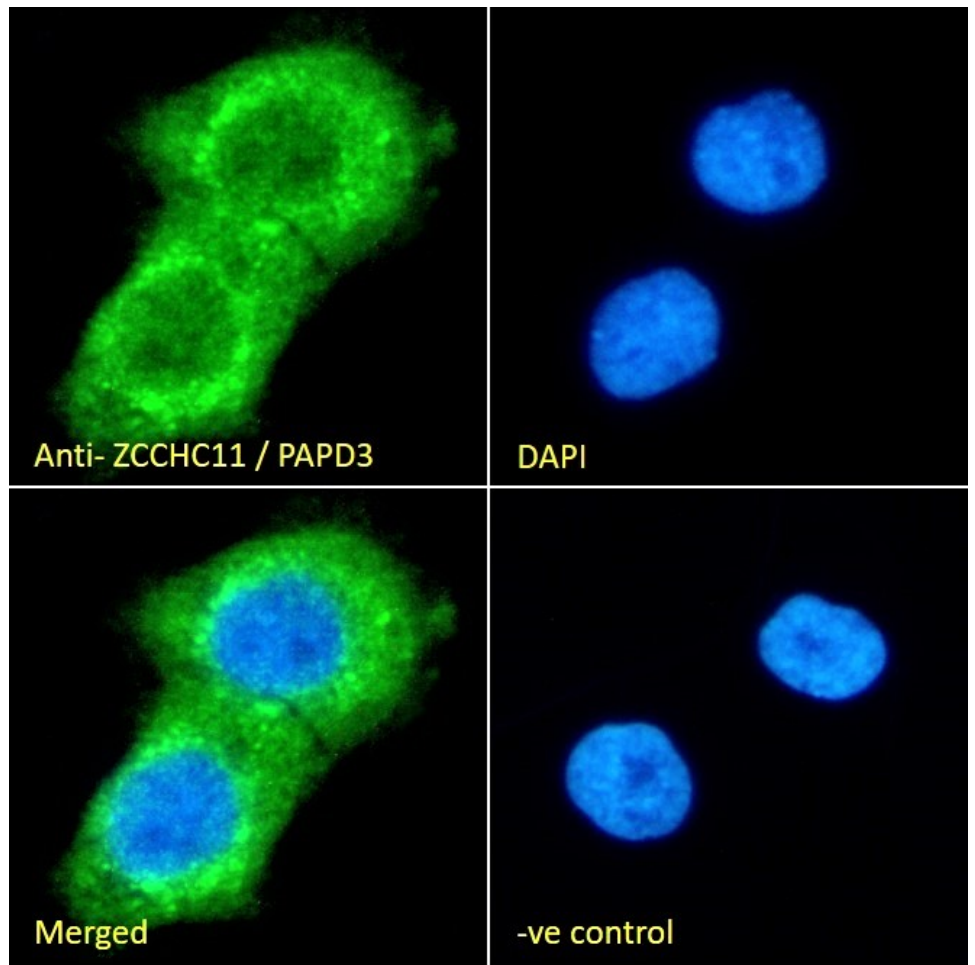
Species Reactivity

Tested: Human

Expected from sequence similarity: Human, Mouse, Rat, Dog, Cow



EB05042 (4µg/ml) staining of paraffin embedded Human Lymph Node. Steamed antigen retrieval with citrate buffer pH 6, HRP-staining.



EB05042 Immunofluorescence analysis of paraformaldehyde fixed A431 cells, permeabilized with 0.15% Triton. Primary incubation 1hr (10ug/ml) followed by Alexa Fluor 488 secondary antibody (2ug/ml), showing cytoplasmic staining. The nuclear stain is DAPI (blue). Negative control: Unimmunized goat IgG (10ug/ml) followed by Alexa Fluor 488 secondary antibody (2ug/ml).