



International Office

Everest Biotech Ltd

Vector Laboratories, Inc.
6737 Mowry Ave
Newark, CA 94560
United States

Customer Service:

customerservice@vectorlabs.com

Technical Service:

technical@vectorlabs.com

Tel: +1 (800) 227-6666

www.everestbiotech.com

**Research Use Only. Not for
diagnostic or therapeutic use.**

EB11553 - Goat Anti-Zfp157 (mouse) Antibody

Size: 100µg specific antibody in 200µl



Target Protein

Principal Names: 2610020C11Rik, A630094N24Rik, AI327407, mszf12, mszf23-1, OTTMUSP00000026164, OTTMUSP00000026165, OTTMUSP00000026166, Zfp157, zinc finger protein 157

Official Symbol: Zfp157

Accession Number(s): NP_082406.2

Non-Human GeneID(s): 72154 (mouse)

Immunogen

Peptide with sequence QCSKQHAYPSVKP, from the internal region of the protein sequence according to NP_082406.2.

Please note the [peptide](#) is available for sale.

Purification and Storage

Purified from goat serum by ammonium sulphate precipitation followed by antigen affinity chromatography using the immunizing peptide.

Supplied at 0.5 mg/ml in Tris saline, 0.02% sodium azide, pH7.3 with 0.5% bovine serum albumin.

Aliquot and store at -20°C. Minimize freezing and thawing.

Applications Tested

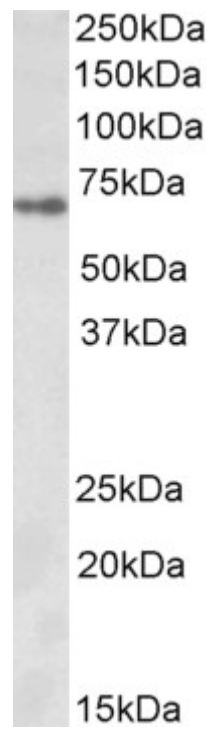
Peptide ELISA: antibody detection limit dilution 1:32000.

Western blot: Approx 65kDa band observed in Mouse Spinal Cord lysates (calculated MW of 66.4kDa according to NP_082406.2). Recommended concentration: 1-3µg/ml.

Species Reactivity

Tested: Mouse

Expected from sequence similarity: Mouse



EB11553 (1 μ g/ml) staining of Mouse Spinal Cord lysate (35 μ g protein in RIPA buffer). Primary incubation was 1 hour. Detected by chemiluminescence.