

UK Office

Everest Biotech Ltd

Cherwell Innovation Centre
77 Heyford Park
Upper Heyford
Oxfordshire
OX25 5HD
UK

Enquiries:

info@everestbiotech.com

Sales:

sales@everestbiotech.com

Tech support:

support@everestbiotech.com

Tel: +44 (0)1869 238326

www.everestbiotech.com

**Research Use Only. Not for
diagnostic or therapeutic use.**

EB10811 - Goat Anti-ZIC3 (aa178-189) Antibody

Size: 100µg specific antibody in 200µl



Target Protein

Principal Names: ZIC3, Zic family member 3 (odd-paired homolog, Drosophila), HTX, HTX1, ZNF203, heterotaxy 1, zinc finger protein ZIC 3, zinc finger protein of the cerebellum 3

Official Symbol: ZIC3

Accession Number(s): NP_003404.1

Human GeneID(s): [7547](#)

Non-Human GeneID(s): 22773 (mouse), 367944 (rat)

Important Comments: This antibody is expected to NOT cross-react with other ZIC proteins.

Immunogen

Peptide with sequence C-HVDNNQVHLGLR, from the internal region of the protein sequence according to NP_003404.1.

Please note the [peptide](#) is available for sale.

Purification and Storage

Purified from goat serum by ammonium sulphate precipitation followed by antigen affinity chromatography using the immunizing peptide.

Supplied at 0.5 mg/ml in Tris saline, 0.02% sodium azide, pH7.3 with 0.5% bovine serum albumin.

Aliquot and store at -20°C. Minimize freezing and thawing.

Applications Tested

Peptide ELISA: antibody detection limit dilution 1:64000.

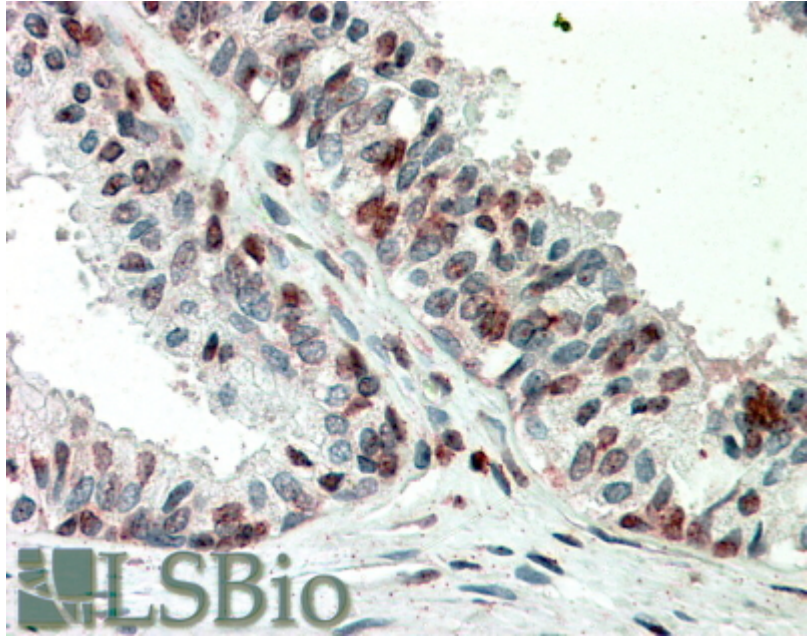
Western blot: Preliminary experiments gave an approx 70kDa band in Human, Mouse and Rat Brain lysates after 1µg/ml antibody staining. Please note that currently we cannot find an explanation in the literature for the band we observe given the calculated size of 50.6kDa according to NP_003404.1. The 70kDa band was successfully blocked by incubation with the immunizing peptide. We would appreciate any feedback from people in the field - have any results been reported with other antibodies/lysates? Have any further splice variants/modified forms been reported?

IHC: In paraffin embedded Human Prostate shows nuclear staining in select secretory cells. Recommended concentration, 5-10µg/ml.

Species Reactivity

Tested: Human

Expected from sequence similarity: Human, Mouse, Rat, Dog, Pig, Cow



EB10811 (5µg/ml) staining of paraffin embedded Human Prostate. Steamed antigen retrieval with citrate buffer pH 6, AP-staining.