



UK Office

Everest Biotech Ltd

Cherwell Innovation Centre
77 Heyford Park
Upper Heyford
Oxfordshire
OX25 5HD
UK

Enquiries:

info@everestbiotech.com

Sales:

sales@everestbiotech.com

Tech support:

support@everestbiotech.com

Tel: +44 (0)1869 238326

www.everestbiotech.com

**Research Use Only. Not for
diagnostic or therapeutic use.**

EBL006-BMP1-S2C2 - Positive Control Lysate for anti- BMP1 antibody

Size: 50ul

Name

Positive Control Lysate for anti-BMP1 antibody (EB12632 Batch Specific #S2C2)

Amount supplied

50ul (5ug/ul protein in RIPA buffer).

Test numbers

7

Storage and Handling

Store lysate at -20°C upon arrival. Avoid repeated freeze /thawed cycles.

Shelf life

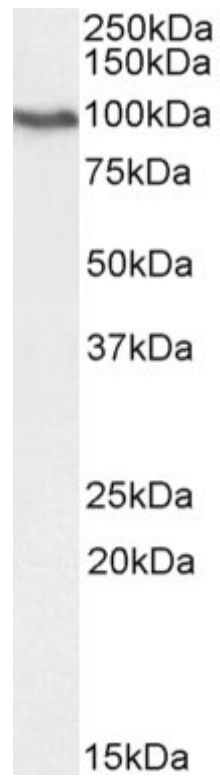
3 months.

Reconstitution

Bring vial to 4 °C and add 100ul RIPA buffer

Application tested

Western Blot: 1.5µg/ml staining of Primary antibody in lysates EBL006-BMP1-S2C2, Approx. 100kDa band observed (calculated MW of 111kDa according to Human NP_006120.1). Primary incubation 1 hour at room temperature. Secondary antibody is EB2ND-002-A at 1:40K



Western Blot: 1.5 μ g/ml staining of Primary antibody in lysates EBL006-BMP1-S2C2, Approx. 100kDa band observed (calculated MW of 111kDa according to Human NP_006120.1). Primary incubation 1 hour at room temperature. Secondary antibody is EB2ND-002-A at 1:40K