



## International Office

### Everest Biotech Ltd

Vector Laboratories, Inc.  
6737 Mowry Ave  
Newark, CA 94560  
United States

Customer Service:

[customerservice@vectorlabs.com](mailto:customerservice@vectorlabs.com)

Technical Service:

[technical@vectorlabs.com](mailto:technical@vectorlabs.com)

Tel: +1 (800) 227-6666

[www.everestbiotech.com](http://www.everestbiotech.com)

**Research Use Only. Not for  
diagnostic or therapeutic use.**

## EBL002-CAPG-P1 - Positive Control Lysate for anti-CAPG antibody

Size: 50ul

### Name

Positive Control Lysate for anti-CAPG antibody (EB12421 Batch Specific #P1)

### Amount supplied

50ul (5ug/ul protein in RIPA buffer).

### Test numbers

7

### Storage and Handling

Store lysate at -20°C upon arrival. Avoid repeated freeze /thawed cycles.

### Shelf life

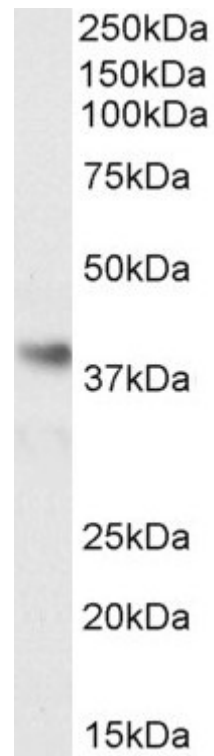
3 months.

### Reconstitution

Bring vial to 4 °C and add 100ul RIPA buffer

### Application tested

Western Blot: 0.3µg/ml staining of Primary antibody in lysate EBL002-CAPG-P1, calculated MW of 38.5kDa according to NP\_001738.2 and 36.9kDa according to NP\_001243069.1). Primary incubation 1 hour at room temperature. Secondary antibody is EB2ND-002-A at 1:40K



Western Blot: 0.3µg/ml staining of Primary antibody in lysate EBL002-CAPG-P1, calculated MW of 38.5kDa according to NP\_001738.2 and 36.9kDa according to NP\_001243069.1). Primary incubation 1 hour at room temperature. Secondary antibody is EB2ND-002-A at 1:40K