



## International Office

### Everest Biotech Ltd

Vector Laboratories, Inc.  
6737 Mowry Ave  
Newark, CA 94560  
United States

Customer Service:

[customerservice@vectorlabs.com](mailto:customerservice@vectorlabs.com)

Technical Service:

[technical@vectorlabs.com](mailto:technical@vectorlabs.com)

Tel: +1 (800) 227-6666

[www.everestbiotech.com](http://www.everestbiotech.com)

**Research Use Only. Not for  
diagnostic or therapeutic use.**

## EBL017-GAPDH-S3 - Positive Control Lysate for anti- GAPDH antibody

Size: 50ul

### Name

Positive Control Lysate for anti-GAPDH antibody (EB06377 Batch Specific #S3)

### Amount supplied

50ul (5ug/ul protein in RIPA buffer).

### Test numbers

7

### Storage and Handling

Store lysate at -20°C upon arrival. Avoid repeated freeze /thawed cycles.

### Shelf life

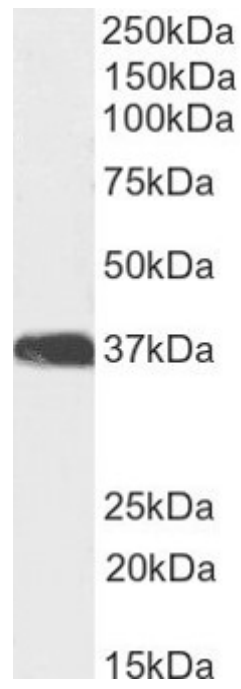
3 months.

### Reconstitution

Bring vial to 4 °C and add 100ul RIPA buffer

### Application tested

Western Blot: 0.5µg/ml staining of Primary antibody in lysates EBL017-GAPDH-S3, approx. 37kDa band observed. (Calculated MW of 36.1kDa according to Human NP\_002037.2). Primary incubation 1 hour at room temperature. Secondary antibody is EB2ND-002-A at 1:40K



Western Blot: 0.5µg/ml staining of Primary antibody in lysates EBL017-GAPDH-S3, approx. 37kDa band observed. (Calculated MW of 36.1kDa according to Human NP\_002037.2). Primary incubation 1 hour at room temperature. Secondary antibody is EB2ND-002-A at 1:40K