



## UK Office

### Everest Biotech Ltd

Cherwell Innovation Centre  
77 Heyford Park  
Upper Heyford  
Oxfordshire  
OX25 5HD  
UK

Enquiries:

[info@everestbiotech.com](mailto:info@everestbiotech.com)

Sales:

[sales@everestbiotech.com](mailto:sales@everestbiotech.com)

Tech support:

[support@everestbiotech.com](mailto:support@everestbiotech.com)

Tel: +44 (0)1869 238326

[www.everestbiotech.com](http://www.everestbiotech.com)

**Research Use Only. Not for  
diagnostic or therapeutic use.**

## EBL009-TOM1L1-P1 - Positive Control Lysate for anti- TOM1L1 antibody

Size: 50ul

### Name

Positive Control Lysate for anti-TOM1L1 antibody (EB08388 Batch Specific #P1)

### Amount supplied

50ul (5ug/ul protein in RIPA buffer).

### Test numbers

7

### Storage and Handling

Store lysate at -20°C upon arrival. Avoid repeated freeze /thawed cycles.

### Shelf life

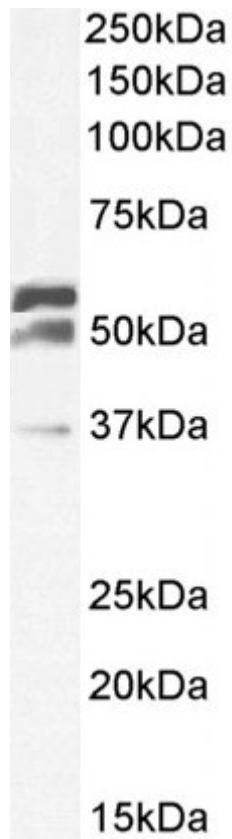
3 months.

### Reconstitution

Bring vial to 4 °C and add 100ul RIPA buffer

### Application tested

Western Blot: 1µg/ml staining of Primary antibody in lysates EBL009, approx. 37+50+55kDa bands observed. (Calculated MW of 38.7kDa according to NP\_001308102.1, 44.3kDa according to NP\_001308103.1 and 53.0kDa according to NP\_005477.2). Primary incubation 1 hour at room temperature. Secondary antibody is EB2ND-002-A at 1:40K



Western Blot: 1µg/ml staining of Primary antibody in lysates EBL009, approx. 37+50+55kDa bands observed.  
(Calculated MW of 38.7kDa according to NP\_001308102.1, 44.3kDa according to NP\_001308103.1 and 53.0kDa according to NP\_005477.2). Primary incubation 1 hour at room temperature. Secondary antibody is EB2ND-002-A at 1:40K